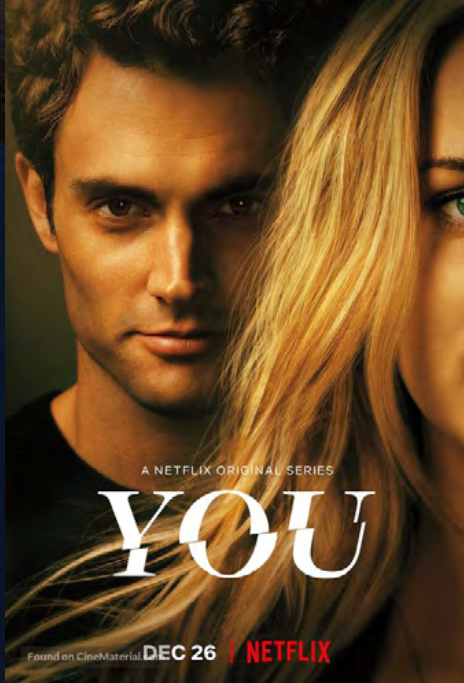


**LIGHTS.
CAMERA.
ACTION.**



**A SUNBELT RENTALS
COMPANY**





ABOUT WILLIAM F. WHITE

WE KNOW FILM AND TELEVISION PRODUCTION

William F. White (WFW), a Sunbelt Rentals Company, is deeply committed to the film and television industry in all the regions we operate in. Since opening our doors nearly 60 years ago, we have expanded our services and extended our reach exponentially. Starting from Canada, then United Kingdom (UK), and soon the United States of America (USA), we are expanding in markets that have robust production activity and the incentives to support them. We have built a notable reputation as the industry's go-to *Partners in Production*, that mirrors our commitment to building and maintaining strong industry partnerships, client relationships, and community engagement. We truly live and breathe this industry.

OUR INTERNATIONAL OFFERING

Since **Sunbelt Rentals** acquired WFW in 2019, we have embarked on an exciting journey of international growth to support our clients on both local and global projects. In 2022, we welcomed **Movietech Camera Rentals Ltd.**, **PKE Lighting (PKE)**, and **Alpha Grip** to the WFW and Sunbelt Rentals family.

Based out of Pinewood Studios in London, and Great Point Seren Studios in Wales, Movietech has over 20 years' experience in the creation and delivery of professional image capture solutions and quality engineered equipment created specifically for the production market.

PKE Lighting was founded in 1991 and is now one of the largest film, television, and photographic lighting rental companies in the UK. With wide-ranging experience of over 30 years, they also

operate a large and varied fleet of lighting vehicles and mobile silent generators, ensuring smooth running of any production. PKE is based in Manchester, UK, with offices in Cardiff, and Belfast.

Operating on a national level, Alpha Grip provides the film and television industry with grip equipment including a notable range of telescopic and modular camera cranes, stabilized and non-stabilized remote heads, and specialist vehicles. They were established in 2004 and are based near Shepperton Studios, Greater London.

Together with Sunbelt Rentals and our combined proven track record, client-focused approach, and turnkey integration in film and television, we bring local expertise and an international reach that is unrivaled in our industry.


OUR INTERNATIONAL FOOTPRINT

CANADA (6)

Toronto, Vancouver, Calgary, Winnipeg, Sudbury, Halifax

UK (6)

London (2), Manchester, Cardiff (2), Belfast

 Existing location

PARTNERS IN PRODUCTION

WE'VE GOT YOUR BACK

WFW is the industry's go-to Partner in Production. With six rental facilities strategically located across Canada, five in the United Kingdom, and expansion plans into the US east and west coast, our laser focus to provide the most comprehensive and technologically advanced rental inventory to producers of all forms of content. From world-class camera, lighting, grip and power in the UK and Canada, along with studios, virtual production volumes, specialty equipment, and location equipment supply in Canada, we've got you covered.

CANADIAN PRODUCTION INCENTIVES

Every province in Canada offers production incentives. For up-to-date information on production incentives in Canada, [click here](#).

PART OF YOUR TEAM

Think of us as your extended production team, we will be there whenever you need us. Rest assured that our crew will go above and beyond to get you what you need. Equally important, our skilled technicians, in-house production experts, and experienced maintenance teams will do whatever it takes to keep your production up and running.



WHAT DRIVES US

OUR SHARED PURPOSE

Helping creators tell stories is what drives us every day. It's no surprise that our team is comprised of passionate and experienced technical experts. From big budget feature films to independent productions, "moving pictures" is our passion and providing your team with the best solutions to make the magic of storytelling happen, is our purpose.

VALUES MATTER

Values are important to us, not only do they set us apart from the pack, but these shared values also bring us together. At the end of the day, it's these principles that we strive to live by in our everyday lives and what we turn to in the face of adversity.

PUT PEOPLE FIRST

We support and respect our team, clients, and community before anything else.

DO WHAT WE SAY

We act with integrity and follow through on our commitments.

FOSTER EXCELLENCE

We engage and empower great people to do great things.

SUPPORT OUR COMMUNITIES

We work with our industry partners to build safe, healthy, inclusive, and sustainable communities.

CLIENTS MATTER

We pride ourselves on the strength of the client relationships we have built over the years. We are more than just suppliers of cutting-edge equipment, studios, and production volumes. Our team of qualified technical experts are available 24/7. From equipment recommendations to on-set troubleshooting and beyond, our clients can always count on us to be their Partners in Production from beginning to end.

SAFETY IN ALL THINGS



The safety of our clients, staff, families, and community is a top priority. It drives our decisions when we design our warehouses or studio properties, and when we bring in new inventory or customize our own. We pride ourselves on going above and beyond our clients' expectations by ensuring that each member of our team meets and exceeds industry training requirements. And the same goes for our equipment too; we adhere to all regulated safety standards to protect and support your team throughout the production process. We believe in reducing risk together as your *Partners in Production*.

OUR COVID PROTOCOLS

As COVID-19 regulations change, we continue to monitor and adjust our protocols, keeping in mind government guidelines, and the needs of our industry.

REDUCING OUR ENVIRONMENTAL FOOTPRINT

Global climate change is a reality affecting how our industry operates now and in the future. To build a broad framework for creating and applying sustainable best practices, **WFW has embarked on an ambitious strategy** that ties into our parent company, Sunbelt Rentals' comprehensive environmental, social, and governance (ESG) platform.

Alongside Movietech, PKE, and Alpha Grip, we will work to reduce our collective environmental footprint. Movietech has signed the **BECTU Green Pledge** and continues to work towards an **ALBERT sustainability certification** to help direct the industry into more sustainable practices, while WFW is a signatory to the **Creative Industries Pact For Sustainable Action**, and a Charter member of both the **REEL Green (BC)** and **Ontario Green Screen** Advisory Boards.



ENERGY

With the support of Sunbelt Rentals we are exploring renewable energy solutions including power purchase agreements and rooftop solar panel installations. All energy consumed in our Canadian facilities is captured and fed into a central portal that provides aggregated consumption and carbon emissions data, which we use to benchmark against further reductions.

In the UK, PKE operates a large fleet of ULEZ compliant vehicles that help in drastically reducing our carbon footprint. All PKE vehicles are capable of running on HVO fuel and the company also supplies HVO fuel to productions.

WASTE

Our spot waste audits are pinpointing gaps and we are applying appropriate education and training initiatives as we build towards a **zero-waste future**. Additionally, we have embraced the principles of circularity as we work to better manage our use and reuse of materials throughout our operations.

EQUIPMENT

Through regular conversations with our clients, we are working directly with vendors to investigate alternative packaging materials and reduce excess equipment packaging from supply chains. We also have one of the largest and latest LED lighting inventories in the industry and promote sustainable lighting methods for the production industry.

We are committed to **zero-emission solutions** through sustainable battery packs and cutting edge alternate fuel methods to provide power for our inventory. Simultaneously, we are engaging stakeholders in an initiative to introduce zero-emission hydrogen fuel cells to power the production of tomorrow.



MAKING AN IMPACT

At WFW, we recognize that we can only ever be as strong as the community in which we exist. We are taking actionable steps to support and nurture our industry in the places where we operate our businesses, with the hope that we are making a positive impact on our society at large.

We actively focus our efforts on supporting local filmmaking communities by working directly with **new and emerging** independent content creators, supporting educational bodies, creating internship opportunities and leading training initiatives in partnership with **industry unions and guilds**. All year-long, we contribute in-kind equipment grants via our **National Grants Program** to a variety of film festivals, co-ops, and post-secondary institutions. We strongly believe in giving back to the industry by providing opportunities to the crew and talent of tomorrow.

Through ongoing partnerships and mentorship programs with organizations like **Women in Film and Television**, **Black Women Film! Canada**, and **Whistler Film Festival's Indigenous Filmmaker Fellowship**, among others, we



have been and are continuing to create opportunities to amplify diverse voices and diverse stories in the industry.

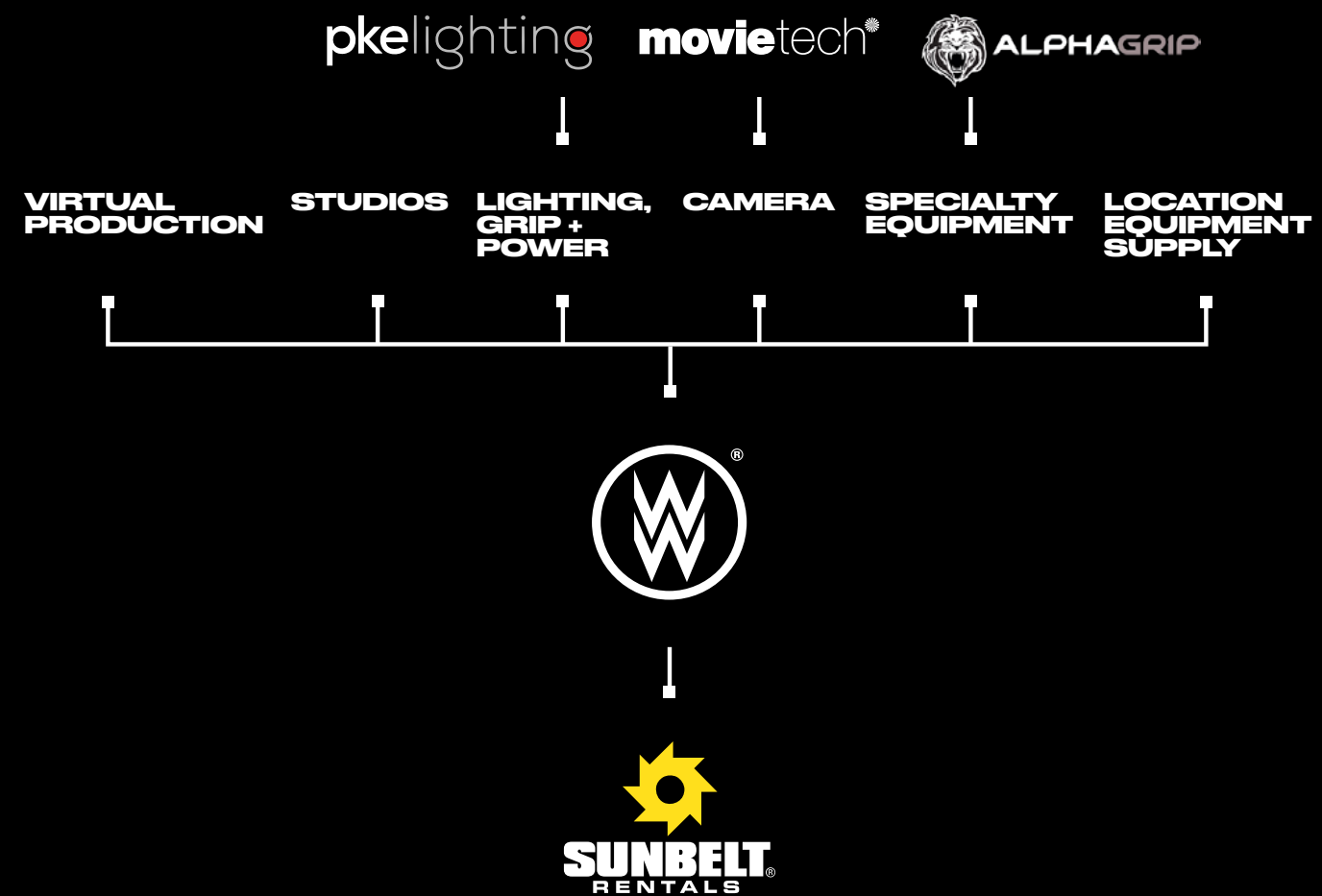
We are a top-tier sponsor of the **Canadian Society of Cinematographers' (CSC) Future is Calling campaign**, which aims to break down barriers that marginalized communities face in accessing the film and television industry. We provide opportunities for promising young visionaries through our annual **Vilmos Zsigmond Cinematography Scholarship** and the **Comweb/Jay Switzer Indigenous Creator Scholarship**. We also support

POV Film, a Canadian organization created to provide youth from underrepresented communities with training, job placement, and professional development in the production industry.

We are also proud to support **Habitat for Humanity**, **Haven on the Queensway**, the **Red Cross**, **Shooting Star Children's Hospices (UK)**, **The Christie NHS Foundation Trust (UK)**, **Down Syndrome Association**, and many other charities that operate in our local communities.



WHAT WE DO



CREATE YOUR VIRTUAL WORLD IN STUDIO

WFW is deeply committed to virtual production as an integral part of the future of filmmaking.

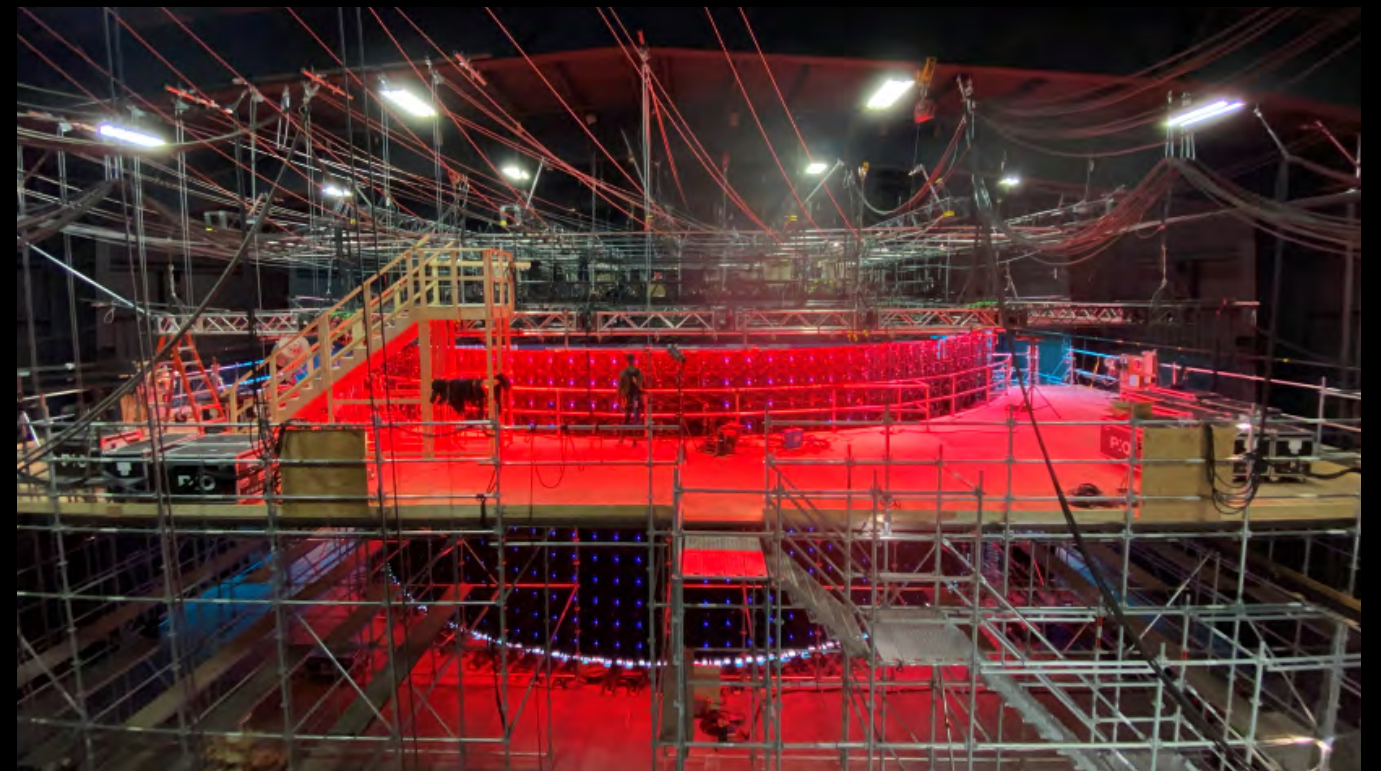
Our partnership with Academy and Emmy award-winning visual effects giant, Pixomondo (PXO), in collaboration with our technology partners Brompton Technology, Epic Games, Lenovo, NVIDIA, and ROE Visual, present clients with unique opportunities to create entire virtual worlds in studio.

Unlike our traditional studio offerings, virtual production allows filmmakers to utilize a combination of live action and cutting-edge digitally created environments rendered in real time on LED walls and ceilings (known as “volumes”) to deliver **a production experience unlike any other**. With this new technology, clients are able keep costs down, increase creative control, reduce their carbon footprint, and provide an interactive experience for cast and crew.

Notable productions like Disney's *The Mandalorian* and CBS's *Star Trek: Discovery* and *Star Trek: Strange New Worlds* have already taken full advantage of this burgeoning technology to create incredible high-fantasy, science fiction worlds all while inside a studio.

Learn more about our virtual production offering including features and benefits, and why it has the potential to revolutionize the film and television industry.

[Media Gallery](#)



VOLUME 1

Designed for features and television series, our first virtual production volume opened in early 2021 and is located in West Toronto.

TORONTO, ON

- Stage: 22,500 sq. ft.
- LED volume: 5,500 sq. ft.
- Shape: Horseshoe (72’ across)
- Ceiling height: 24’
- ROE LED-BP2 wall panels: 1800
- ROE LED-CB5S ceiling panels: 650

Fact Sheet



VOLUME 2

Located in Stage 6 at Studio City’s recently completed development in the Port Lands district of the city’s downtown core, this volume is designed for shorter duration projects including film and television productions, as well as commercials that only require the space for a limited amount of time – days, weeks, or months.

TORONTO, ON

- Stage: 16,100 sq. ft
- LED volume: 2,000 sq. ft.
- Shape: Semi-circle (62’ across)
- Ceiling height: 20’4” (articulating ceiling sections)
- ROE LED-BP2 wall panels: 720
- ROE LED-CB3S ceiling panels: 175

Fact Sheet



VOLUME 3

Our first west coast-based virtual production offering is one of the largest volumes in the world and was constructed in the shape of a circle to provide content creators with 310-degrees of LED screens. This volume has been designed to service features and television series.

VANCOUVER, BC

- Stage: 20,000 sq. ft.
- LED volume: 7,000 sq. ft.
- Shape: Circle (80’ across, 310°)
- Ceiling height: 28’ from floor (24’5” from riser)
- ROE LED-BP2 wall panels: 2504
- ROE LED-CB5S ceiling panels: 758

Fact Sheet



STUDIOS THAT MATCH YOUR AMBITION



WFW operates a growing portfolio of state-of-the-art production studios that can handle projects of any size. With over 35 sound stages and ample mixed use high-ceiling warehouse space spread across our **16 studio facilities**, WFW now manages over **1.55 million square feet**, and **markets an additional 178,000 square feet of production-ready studio space**, with more to come in the UK and US in the near future.

In addition to our studio spaces, we also have a **23-acre Backlot** in Canada, complete with 30 storefronts and five interior sets. This versatile and dynamic location can easily transform from small town to city, from modern day to the Victorian era. There are also 60 more acres for support or any other build.

Our studios offer strategic locations with ample parking, support areas, workshops, and safety-first spray paint booths (in six of our studios). Each studio is equipped with various technical amenities such as the latest fibreoptic connectivity **creating a modern and comfortable turnkey work environment**.

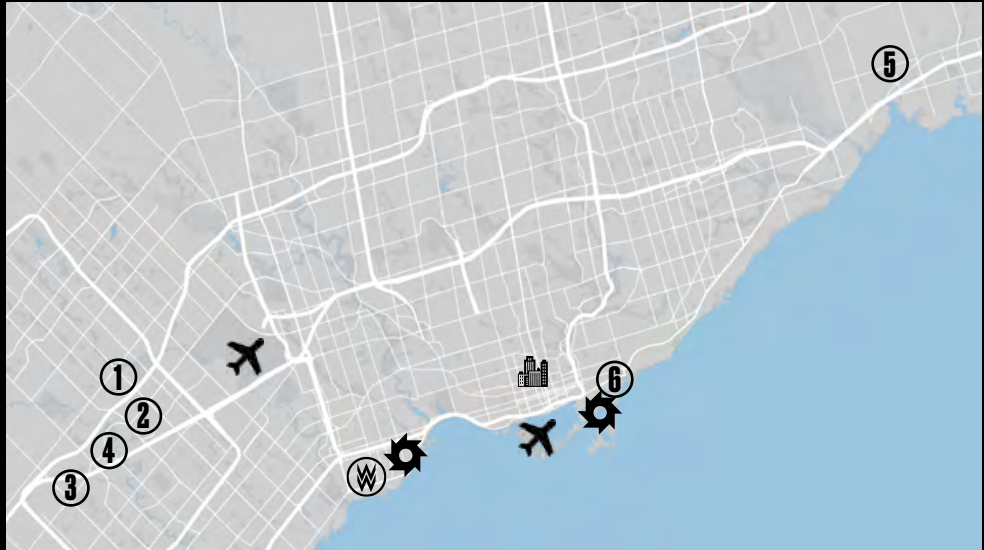
We also work closely with our clients to support any **sustainability requirements** while we continue to build upon our own. We are planning to install EV charging stations at our studios, and where possible, we ensure power-saving, motion-sensor LED lighting is in place, touchless faucets and hand dryers are implemented, and water fountain access is available to fill reusable water bottles.

As safety is always top of mind, we also incorporate **safety measures** like fire lanes and first-aid kits, which are installed at every Health and Safety station throughout the buildings. Additionally, our Studio Coordinators are trained on MEWPs (mobile elevating work platforms), so you will always have help from our team should you need it.

All other WFW services are within short driving distances of each studio facility, ensuring quick response and support from any area of our business.

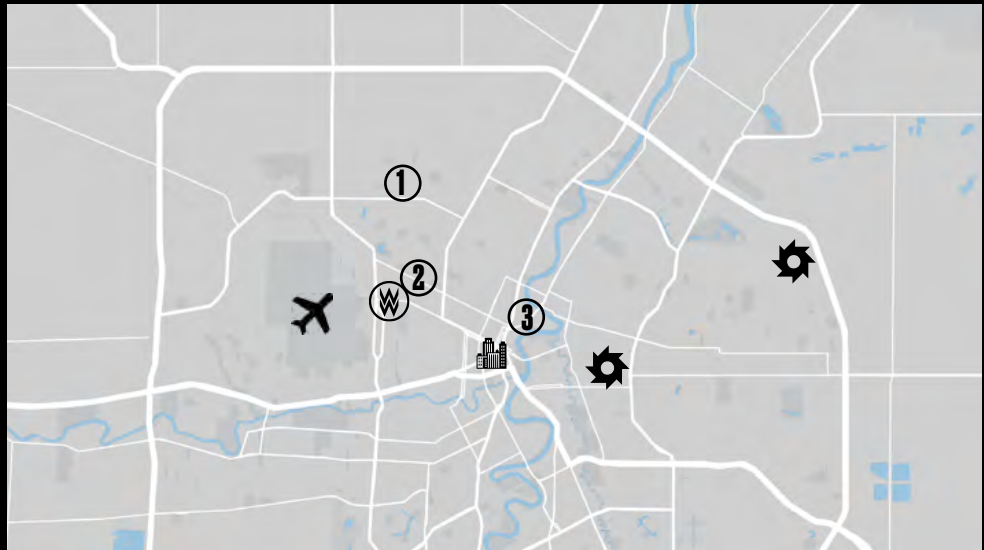


TORONTO



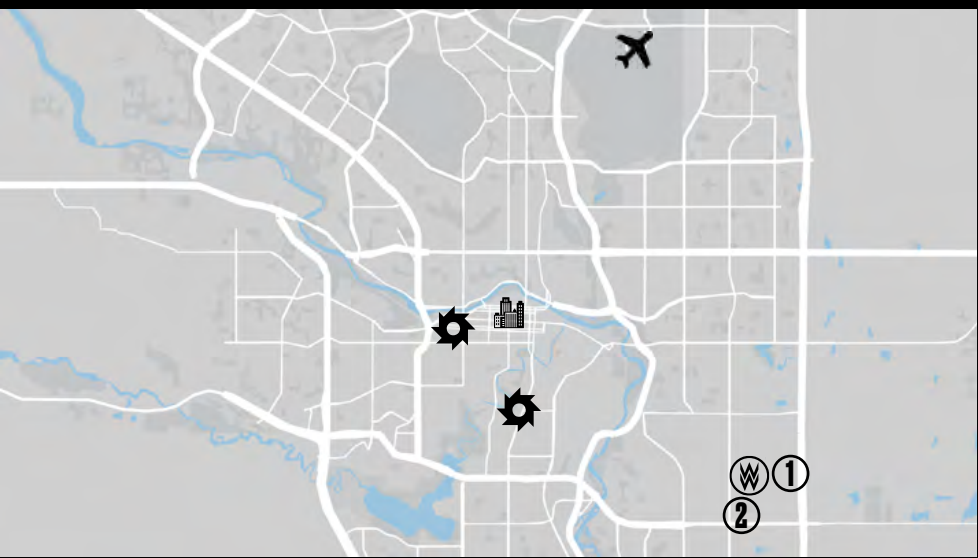
- | | | |
|-------------------------------------|----------------------|---------------------|
| William F. White International Inc. | Edwards Blvd. Studio | Legacy Studio |
| Downtown Toronto | Heritage Studio | WFW Backlot |
| Sunbelt Rentals | Century Studio | Studio City Toronto |
| Pearson International Airport | | |

WINNIPEG



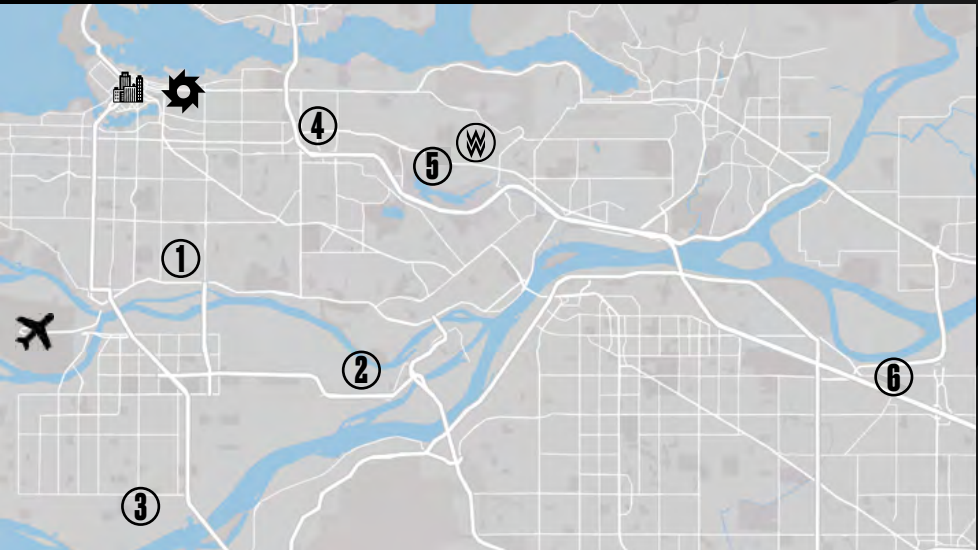
- | | |
|-------------------------------------|----------------------------|
| William F. White International Inc. | Big Sky Studios |
| Downtown Winnipeg | Manitoba Production Centre |
| Sunbelt Rentals | Manitoba Film Studios |
| Winnipeg International Airport | |

CALGARY

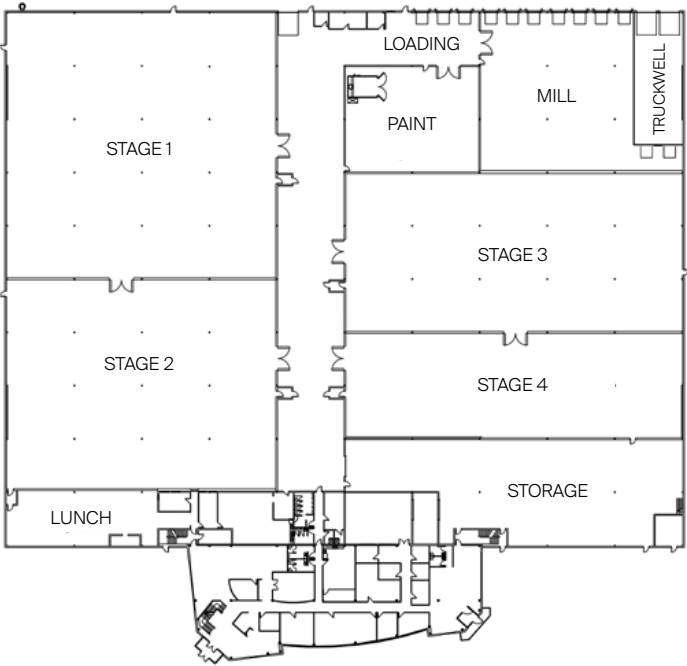


- | | |
|-------------------------------------|-------------------------------|
| William F. White International Inc. | Fortress Studio |
| Downtown Calgary | Fortress+ Support |
| Sunbelt Rentals | Calgary International Airport |

VANCOUVER



- | | | |
|-------------------------------------|----------------------|----------------------|
| William F. White International Inc. | Ironwood Studio | Lakewood Flex Space |
| Downtown Vancouver | Fraserwood Studio | Riverwood Flex Space |
| Sunbelt Rentals | Copperwood Studio | |
| Vancouver International Airport | Creekwood Flex Space | |



6115 EDWARDS BOULEVARD,
MISSISSAUGA, ON

- Stage 1:** 24,800 sq. ft. (160' x 155')
- Stage 2:** 20,000 sq. ft. (160' x 125')
- Stage 3:** 18,400 sq. ft. (198' x 93')
- Stage 4:** 12,400 sq. ft. (198' x 63')
- Mill:** 11,100 sq. ft.
- Paint:** 4,900 sq. ft.
- Production offices:** 21,545 sq. ft.
- Storage:** 10,240 sq. ft.
- Lunch:** 4,700 sq. ft.

Fact Sheet

EDWARDS BLVD.

Edwards Blvd. Studio offers 151,130 square feet of production-ready space, with 40 feet in column spacing in the stages, and 28 feet clear height throughout the building.

Edwards Blvd. houses four sound stages as well as a mill shop, paint shop, two floors of departmental offices, and ample storage space.



HERITAGE

Heritage Studio provides clients with a 181,000 square foot facility complete with four stages, two offices, and double the construction space for wardrobe, set dec, props, paint, mill, and lockups. It has 39 feet in column spacing in the stages, with a ceiling height of 30 feet.

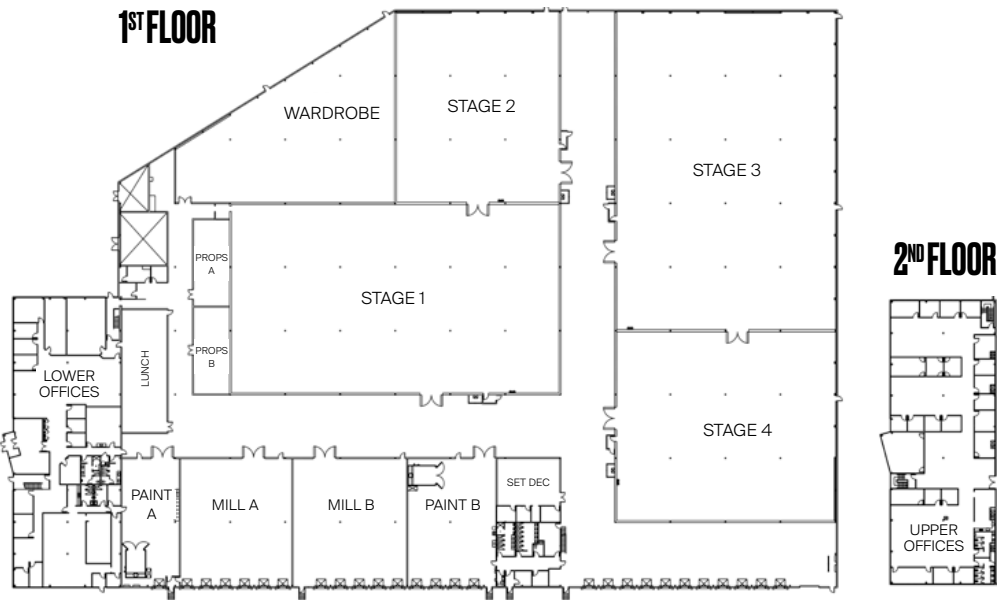


6110 CANTAY RD,
MISSISSAUGA, ON

- Stage 1:** 24,840 sq. ft.
- Stage 2:** 12,558 sq. ft.
- Stage 3:** 27,364 sq. ft.
- Stage 4:** 16,160 sq. ft.
- 1st Floor Offices:** 12,500 sq. ft.
- 2nd Floor Offices:** 12,500 sq. ft.
- Lunch:** 2,200 sq. ft.

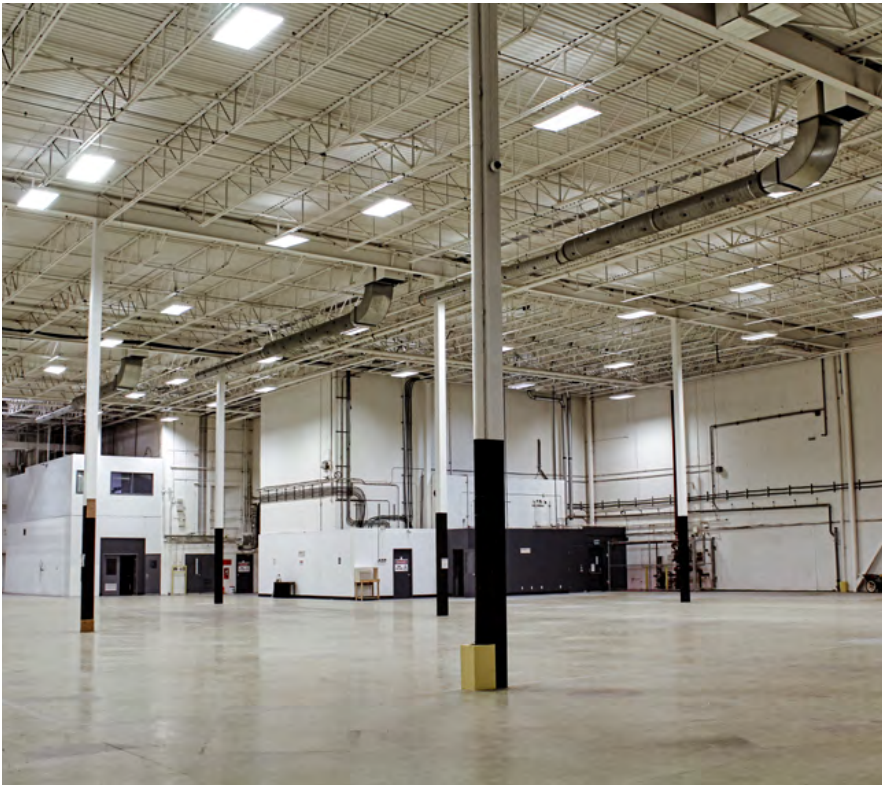
- Wardrobe:** 9,196 sq. ft.
- Set Dec:** 1,155 sq. ft.
- Props A:** 1,226 sq. ft.
- Props B:** 1,226 sq. ft.
- Paint A:** 2,800 sq. ft.
- Paint B:** 4,390 sq. ft.
- Mill A:** 5,600 sq. ft.
- Mill B:** 5,600 sq. ft.

Fact Sheet



CENTURY

Century Studio offers clients 68,000 square feet of production space, with a clear height of 32 feet and 52 feet in column spacing. The facility has a large art department, set dec and prop lockups, green rooms, client lounges, and dressing rooms. It features 24/7 security, double loading bay doors, heating, ventilation, and more.



7030 CENTURY AVENUE
MISSISSAUGA, ON L5N 2V8

Stage: 33,000 sq. ft.
Office Space: 18,000 sq. ft.
Costume & Wardrobe: 5,000 sq. ft.
Support Space: 12,000 sq. ft.

Fact Sheet



LEGACY

Legacy Studio provides clients with a 180,000 square foot facility with four stages, wardrobe, set dec, props, mill and a full service paint shop, complete with a paint spray booth. It has 36' x 44' bays, with a ceiling height of 28 feet clear. All offices are equipped with fibre-optic services and are fully furnished, providing a modern and comfortable turn-key work environment.

6200 CANTAY ROAD,
MISSISSAUGA, ON

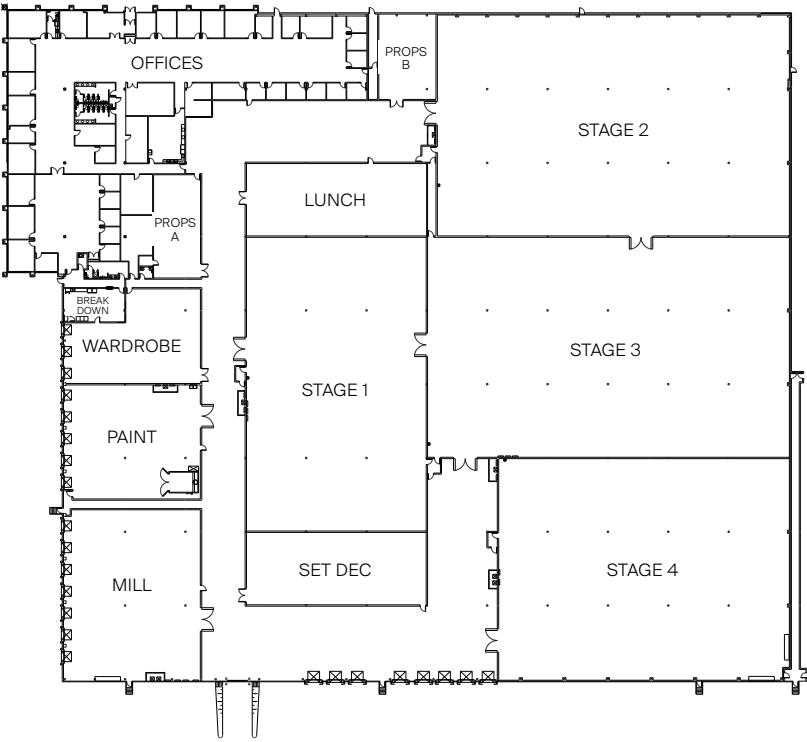
Building Specs:
Stage 1: 18,500 sq. ft.
Stage 2: 27,500 sq. ft.
Stage 3: 28,000 sq. ft.
Stage 4: 22,500 sq. ft.

Total Stage: 96,500 sq. ft.

Main Offices: 20,400 sq. ft
Props A: 1,500 sq. ft.
Props B: 1,700 sq. ft.
Lunch: 4,500 sq. ft
Wardrobe: 3,700 sq. ft.
Break Down: 420 sq. ft.
Paint: 5,200 sq. ft.
Mill: 8,300 sq. ft.
Set Dec: 4,500 sq. ft.

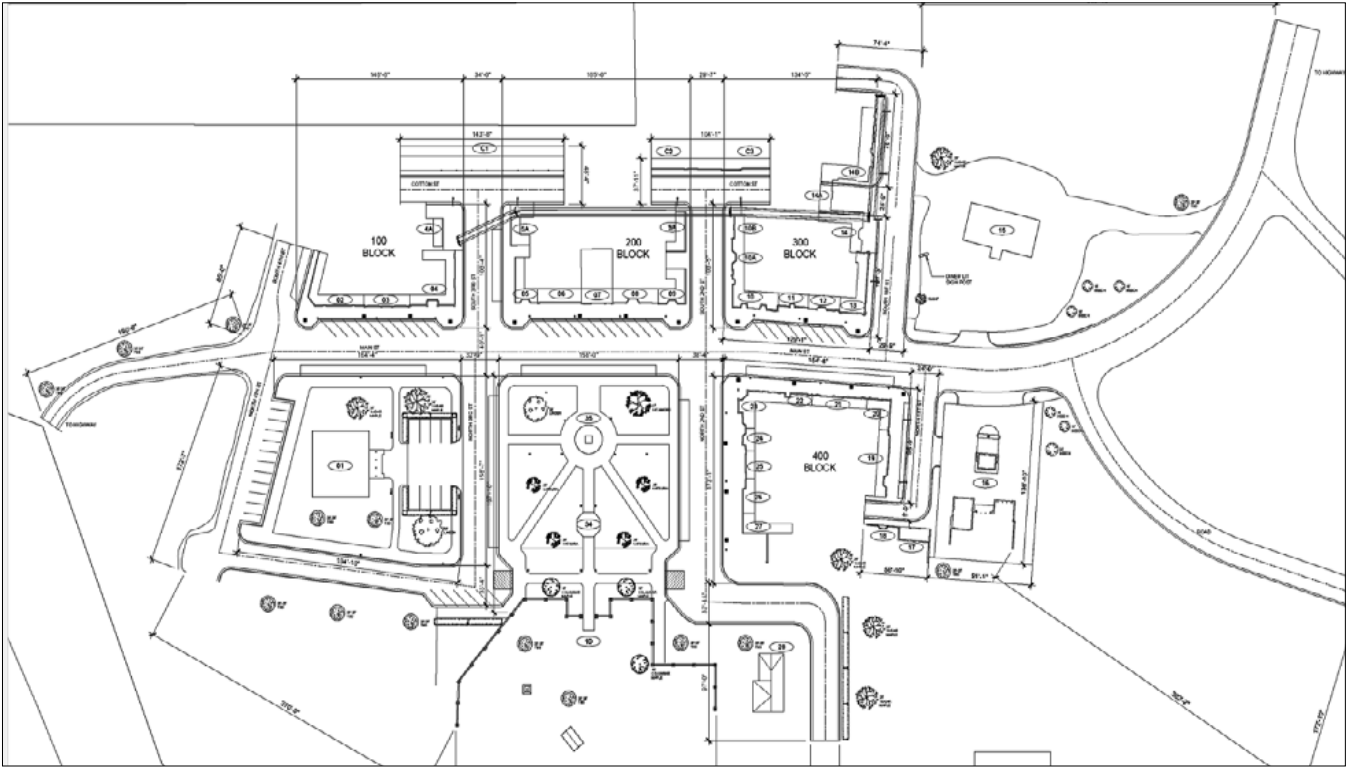
Total Facility Space: 180,917 sq. ft.

Fact Sheet



BACKLOT

WFW’s expansive backlot is located in the City of Pickering, north of downtown Toronto. The 23-acre, modern day small town is situated on a 90-acre plot of land and has been purposefully built for features, TV series and commercials. In addition to the 30 stores and shops currently on the property, the town is easily expandable and can be converted to suit productions of all types, from rustic western settings to bustling New York City streets.



PICKERING, ON

Town: 23 acres
Property: 90 acres
Property type: Farmland
Buildings (interior sets):

- Diner
- Town Hall
- Town Square
- Gas Station
- Police Station

Fact Sheet

Media Gallery



STUDIO CITY TORONTO

Studio City Toronto is conveniently located in the east end of the city's downtown core. Spread across 148,000 square feet, Studio City Toronto is a purpose-built facility made up of six sound stages, including the renowned jumbo stage – a 36,000 square foot column-free stage with 55’ ceiling clearance.

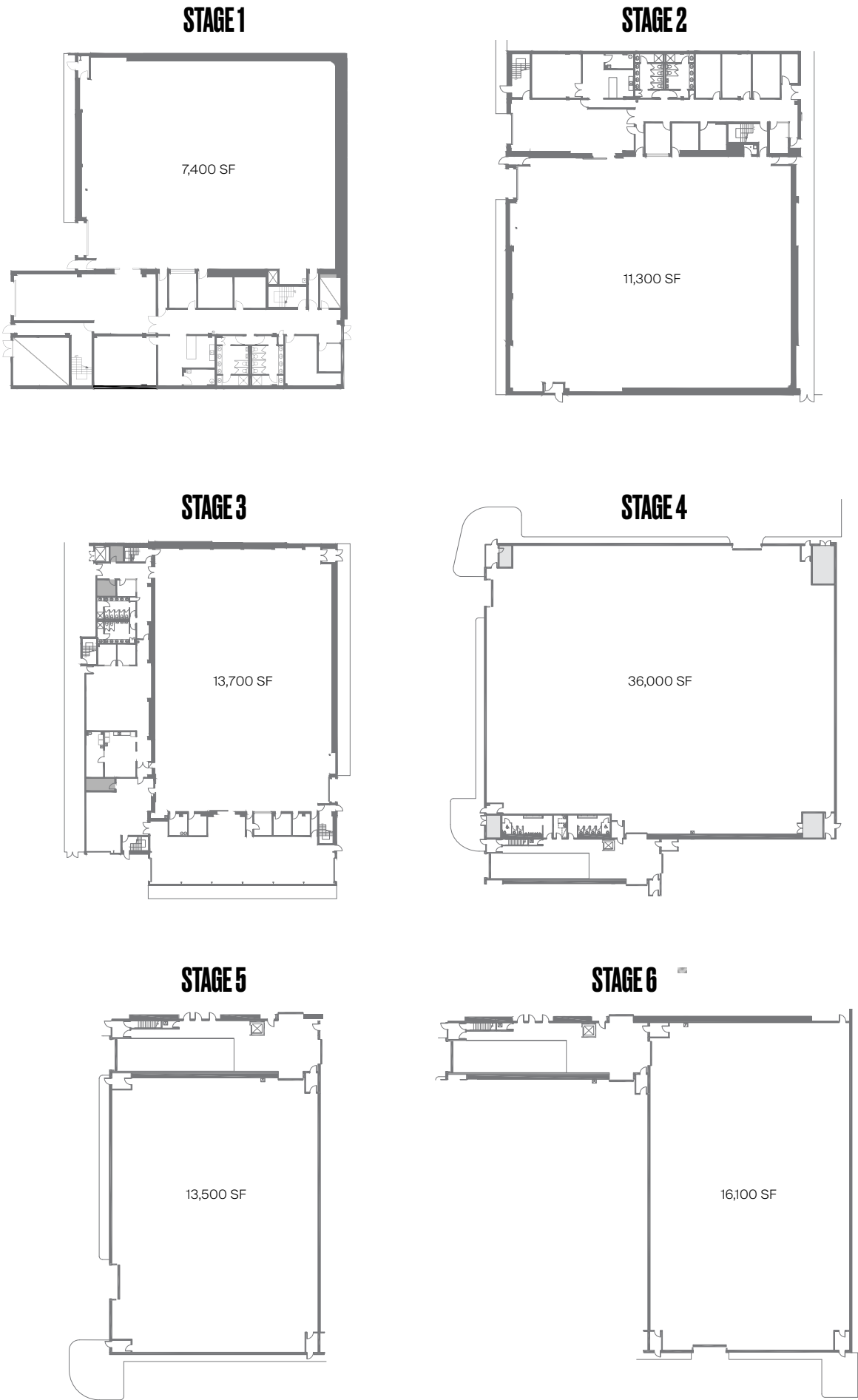
Located five minutes away at 685 Lake Shore Blvd E is an 11,400 square foot facility that can be divided into two smaller spaces (8,100 square feet and 3,300 square feet) that can be used for mill, paint, set decoration, or storage. Studio City Toronto is your one-stop shop for a comfortable turn-key work environment.



915 LAKE SHORE BLVD E
TORONTO, ON M4M 1B4

- Stage 1: 7,400 sq. ft.
- Stage 2: 11,300 sq. ft.
- Stage 3: 13,700 sq. ft.
- Stage 4: 36,000 sq. ft.
- Stage 5: 13,500 sq. ft.
- Stage 6: 16,100 sq. ft.
- Total Stage: 98,000 sq. ft.
- Office Space: 20,000 sq. ft.
- Support Space: 3,320 sq. ft.
- Total Facility Space: 148,000 sq. ft.

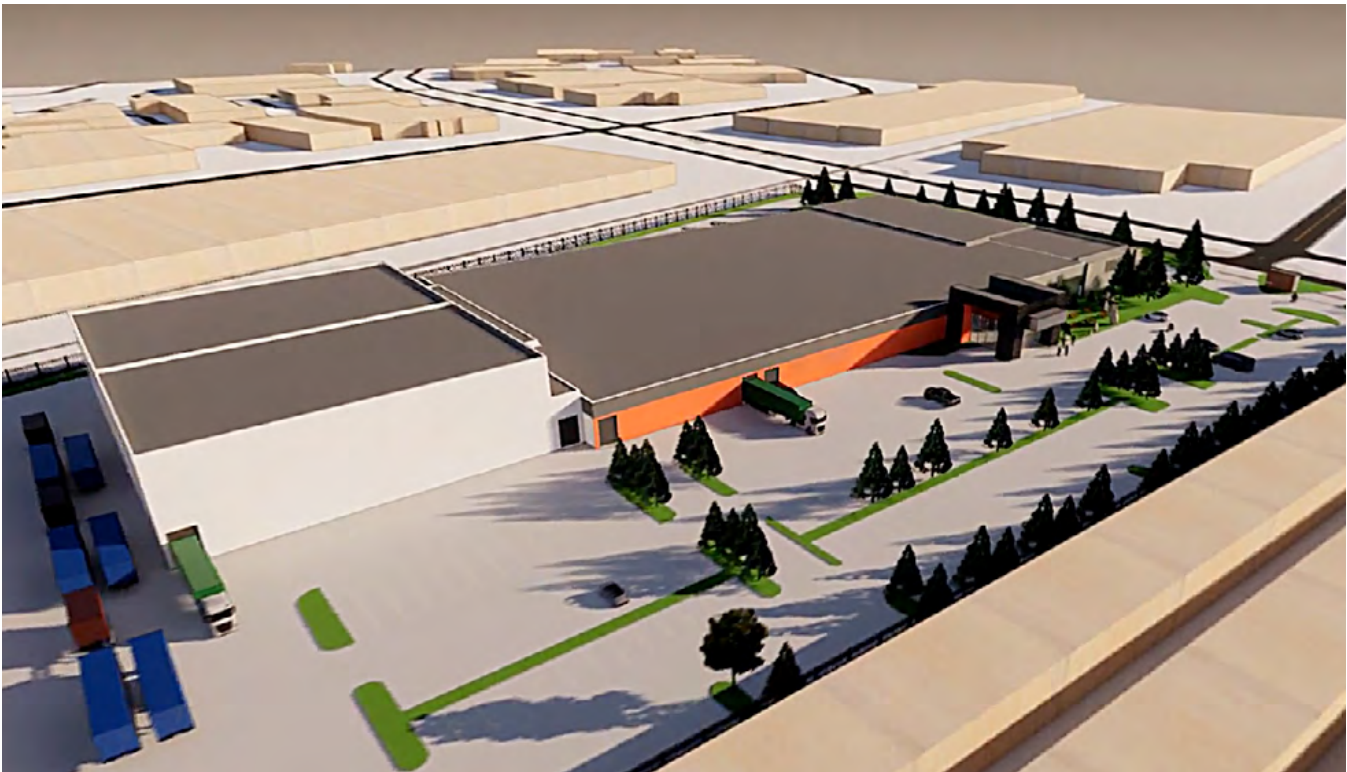
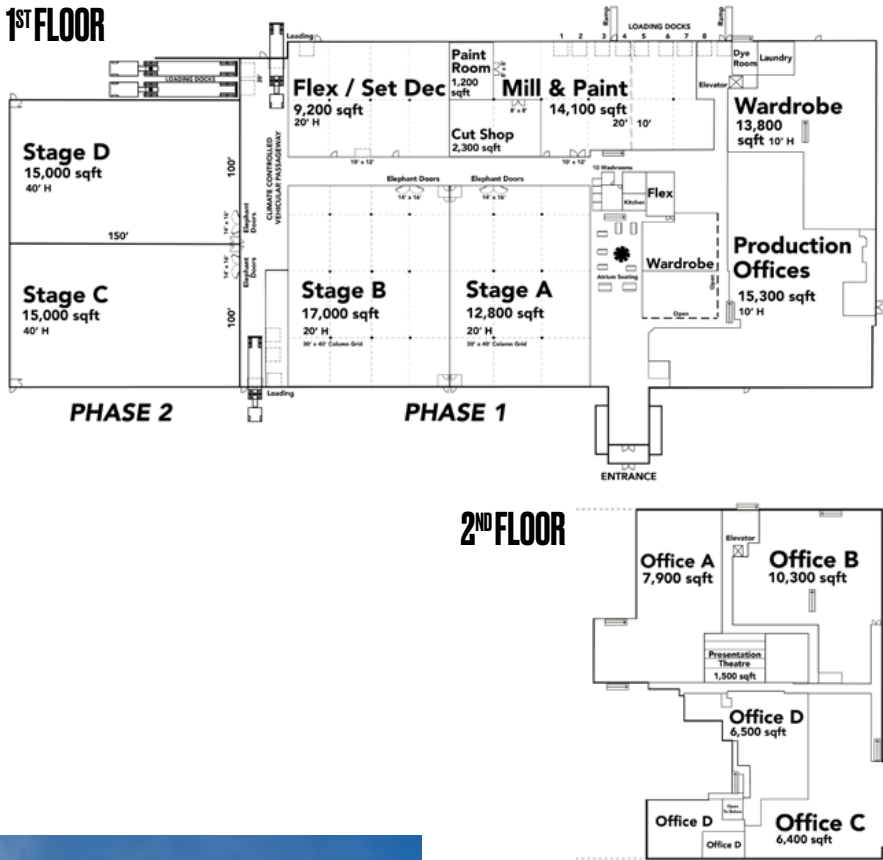
Fact Sheet



BIG SKY

Nestled in the heart of the Canadian Prairies, Big Sky Studios (BSS) is a full-service motion picture studio designed for all of your creative film and television projects. This 187,000 sq. ft. studio complex comes complete with four stages, production and executive offices, mill and paint shop, wardrobe with laundry and dye, presentation theatre, and more.

WFW is the equipment provider for BSS, which is owned and operated by Vancouver-based Eighth Avenue Development Group Ltd., the general partner for Eighth Winnipeg Studios Limited Partnership.



1771 INKSTER BOULEVARD
WINNIPEG, MB, R2X 1R3

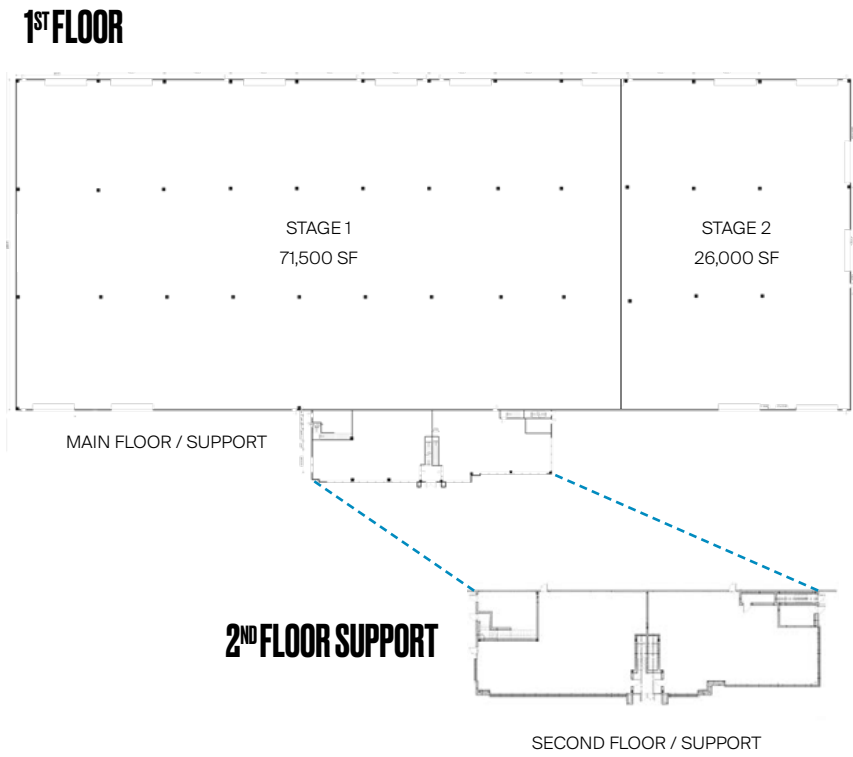
Stage: 59,800 sq. ft.
Office Space: 46,400 sq. ft.
Costume & Wardrobe: 13,800 sq. ft.
Support Space: 40,600 sq. ft.

Fact Sheet



FORTRESS

Fortress Studio is five minutes away from Fortress+ Support, the Calgary Film Centre, WFW, and a large outdoor green space. It provides Calgary clients with over 95,000 square feet of stage space with a clear height of 36 feet, and 65 feet in column spacing. The facility is on 11.85 acres, and it boasts drive-through loading, ample parking, and two make-up air systems with 100,000 CFM capacity each.



**6740-76 AVENUE SE,
CALGARY, AB**

Stage: 71,500 sq. ft.
Stage/Support: 26,000 sq. ft.
Main Floor/Support: 5,800 sq. ft.
Second Floor/Support: 5,800 sq. ft.
Total Stage: 97,500 sq. ft.
Total Facility Space: 109,100 sq. ft.

Fact Sheet

FORTRESS+

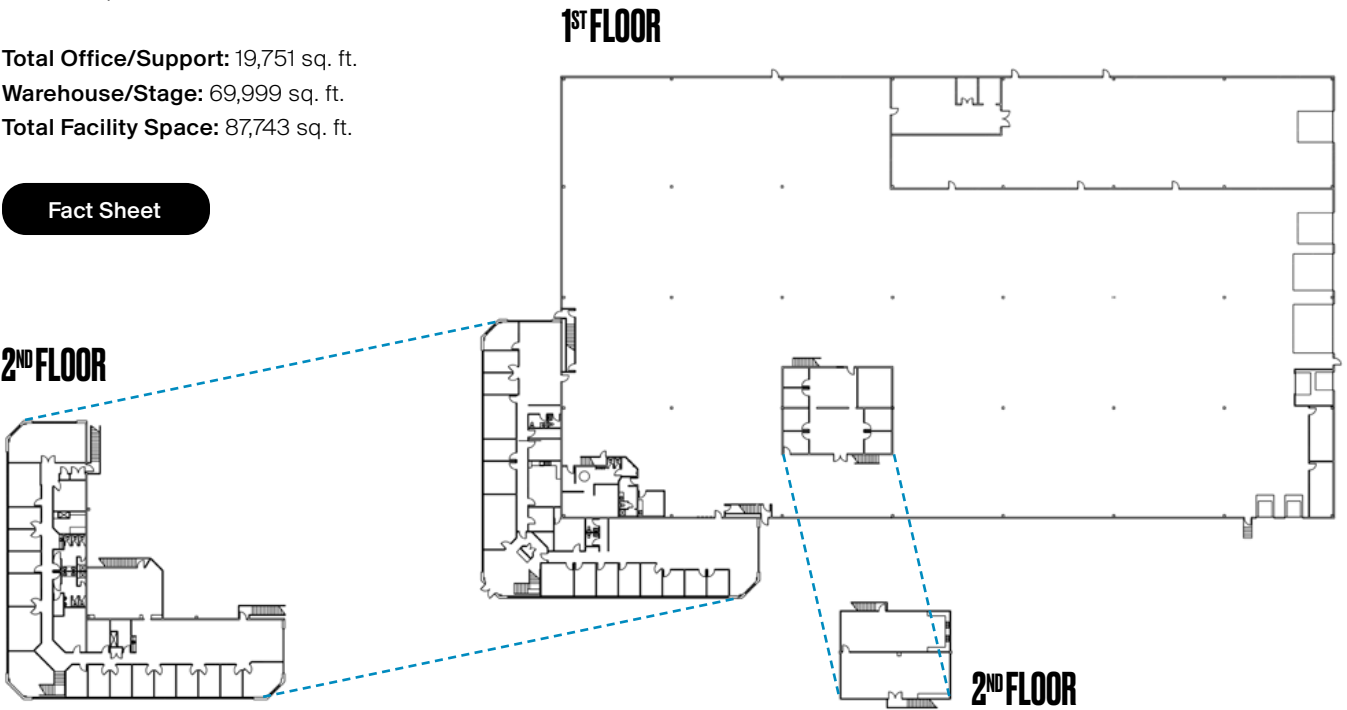
Fortress+ Support is five minutes away from Fortress Studio, the Calgary Film Centre, and WFW. It offers Calgary clients an additional 69,999 square feet of support space with column spacing of 46 feet, and 28 to 29 feet of clear height. The facility also offers almost 20,000 square feet of office space, featuring over 30 private offices, two large boardrooms, open workspaces, a full kitchen, and an additional kitchenette for use.



**5616-80 AVENUE SE,
CALGARY, AB**

Total Office/Support: 19,751 sq. ft.
Warehouse/Stage: 69,999 sq. ft.
Total Facility Space: 87,743 sq. ft.

Fact Sheet

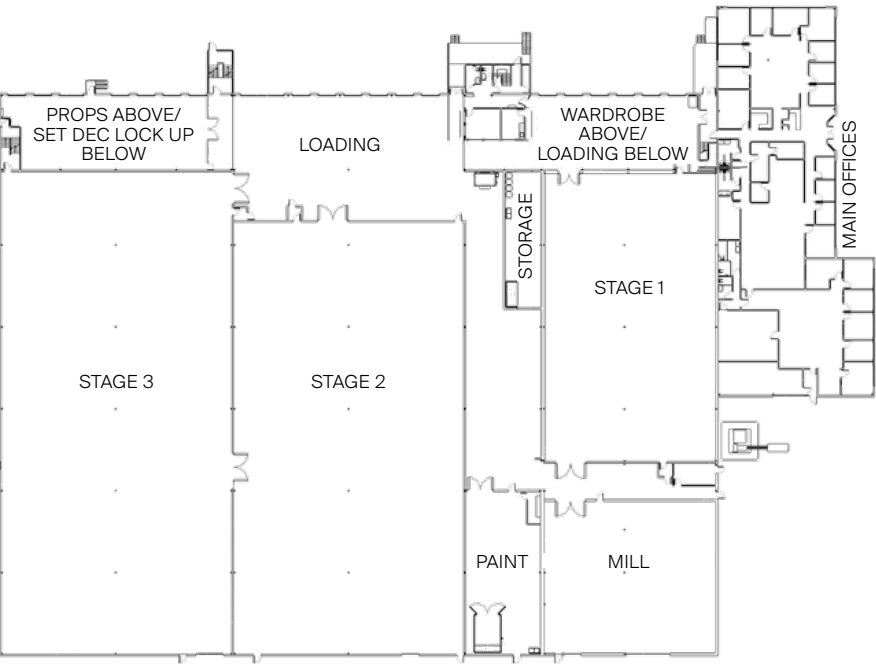




COPPERWOOD

WFW Studios Copperwood is a 106,000 square feet premium, 31 feet clear height, and 52 feet column spacing, full-service facility located in Richmond.

The space provides clients with three large, engineered sound stages, mill shop and paint shop, additional support space, along with ample circus and crew parking. All offices are equipped with fibre-optic services and are fully furnished, providing a modern and comfortable turn-key work environment.



12211 HORSESHOE WAY,
RICHMOND, BC

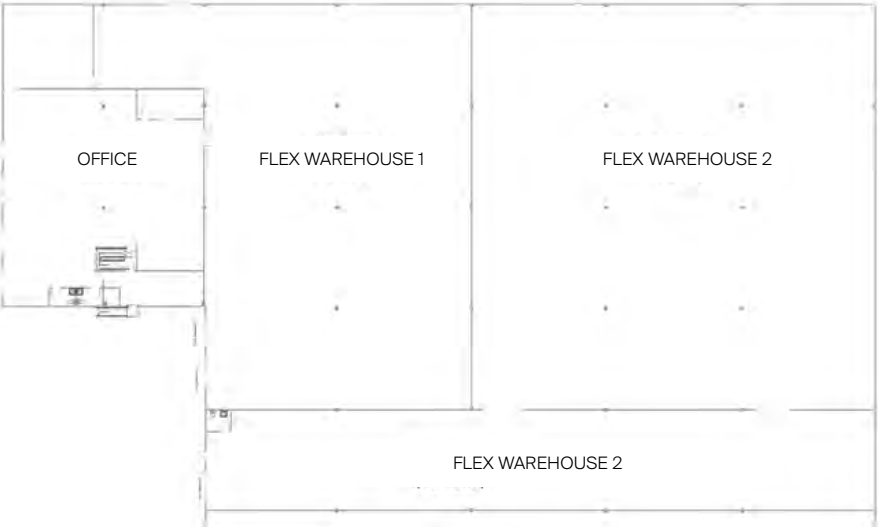
- Stage 1: 10,140 sq. ft. (130' x 78')
- Stage 2: 21,525 sq. ft. (205' x 105')
- Stage 3: 23,415 sq. ft. (223' x 105')
- Mill: 5,800 sq. ft.
- Paint: 2,800 sq. ft.
- Production offices: 11,580 sq. ft.
- Wardrobe: 3,977 sq. ft.
- Props: 3,977 sq. ft.
- Set dec lock-up: 3,977 sq. ft.

Fact Sheet

3819 STILL CREEK AVE,
BURNABY, BC

- Flex 1: 10,320 sq. ft. (86' x 120')
- Flex 2: 14,400 sq. ft. (120' x 120')
- Flex 3: 5,920 sq. ft. (198' x 29'8")
- Office: 5,631 sq. ft.

Fact Sheet



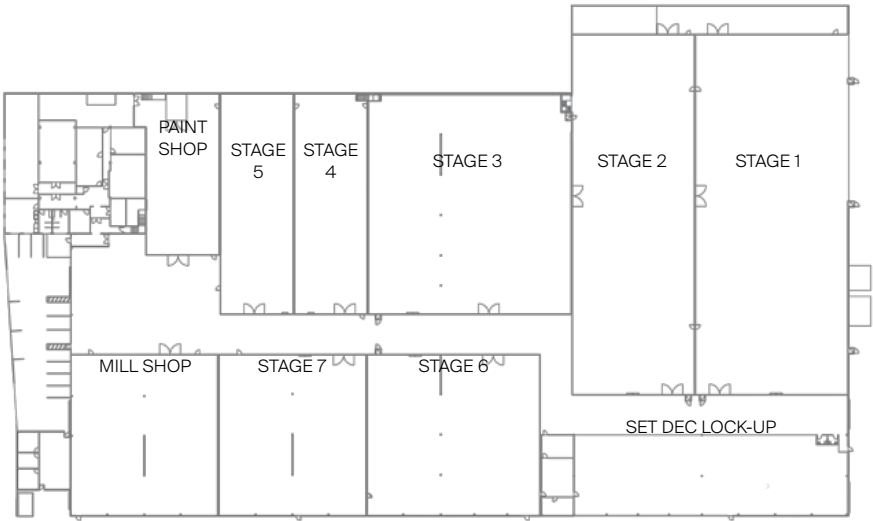
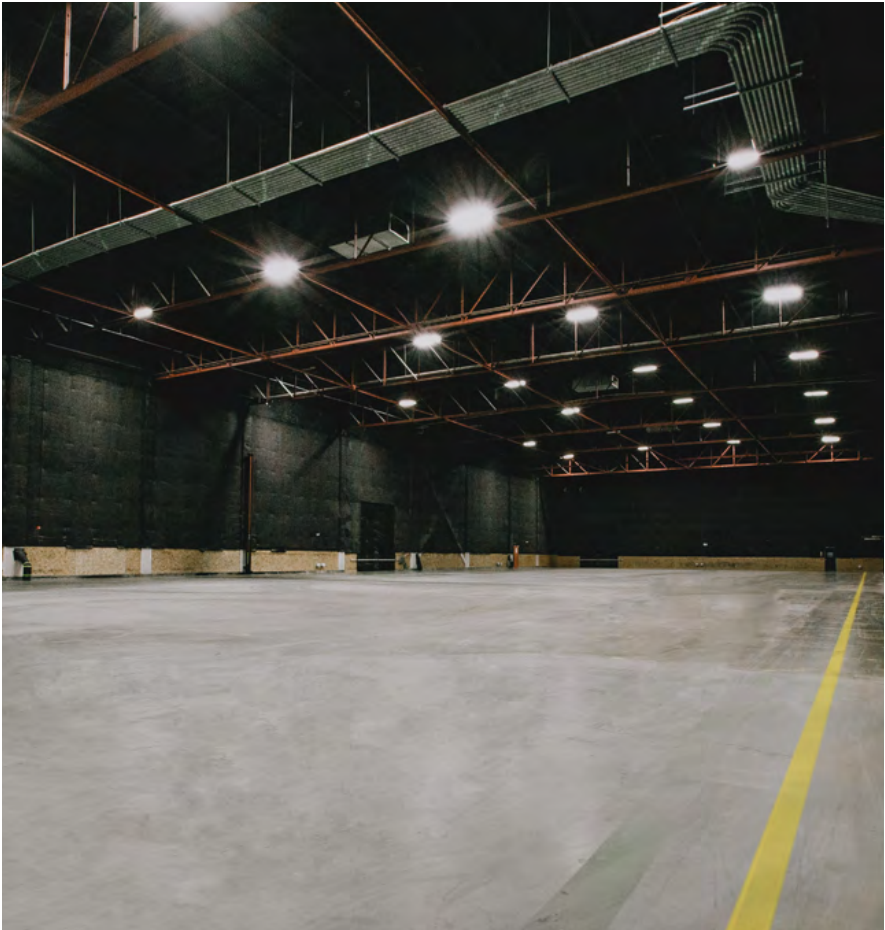
CREEKWOOD

Creekwood Studio is a multipurpose flex space with 36,000 square feet including 5,600 square feet of office space. It features 23 feet clear ceiling height and 45 feet clear span of column spacing. This property includes three dock doors (two docks and one drive up) and 22 designated parking stalls with access to additional parking.

The studio is a 40-minute drive to YVR International Airport and only 15 minutes to William F. White International.

IRONWOOD

Across 177,000 square feet of production-ready space, WFW Studios Ironwood boasts ceilings of 27 to 31 feet clear height and 25 feet to clear span of column spacing throughout the facility. Ironwood has seven sound stages as well as a mill shop, a paint shop, departmental offices, boardrooms, and script-reading rooms. Ironwood’s fully furnished production offices come equipped with 10 GB fibre-optic service. In addition, the sound stages are equipped with state-of-the-art fibre that complements motion capture and VR systems.



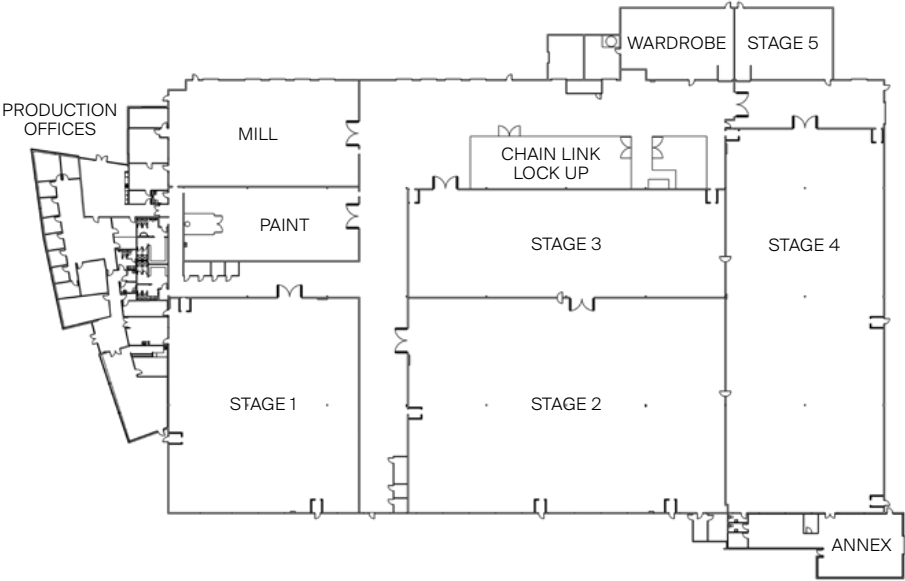
888 SE MARINE DRIVE,
VANCOUVER, BC

- Stage 1: 24,888 sq. ft. (244' x 102')
- Stage 2: 20,008 sq. ft. (244' x 82')
- Stage 3: 20,711 sq. ft. (149' x 139')
- Stage 4: 7,301 sq. ft. (49' x 149')
- Stage 5: 7,301 sq. ft. (49' x 149')
- Stage 6: 12,870 sq. ft. (110' x 117')
- Stage 7: 10,890 sq. ft. (110' x 99')
- Mill shop: 10,670 sq. ft. (97' x 110')
- Paint shop: 5,341 sq. ft. (49' x 109')
- Main offices (2nd floor): 8,355 sq. ft.
- Lower offices: 8,355 sq. ft.
- Classroom: 1,500 sq. ft.
- Set dec lock-up: 10,000 sq. ft.

Fact Sheet

FRASERWOOD

WFW Studios Fraserwood offers 25 feet clear height ceilings and 45 feet to clear span column spacing, with five sound stages, a mill shop, a paint shop and additional support areas across 119,000 square feet of production-ready space. The studio is located 30 minutes from downtown. Fully furnished production offices with fibre-optic connectivity make for a modern turnkey work environment.



22031 FRASERWOOD WAY,
RICHMOND, BC

- Stage 1: 14,760 sq. ft. (120' x 123')
- Stage 2: 22,263 sq. ft. (181' x 123')
- Stage 3: 10,860 sq. ft. (181' x 60')
- Stage 4: 20,700 sq. ft. (90' x 230')
- Stage 5: 2,350 sq. ft. (55' x 40')
- Mill: 7,200 sq. ft.
- Paint: 5,200 sq. ft.
- Production offices: 9,200 sq. ft.
- Annex: 3,200 sq. ft.
- Wardrobe: 2,600 sq. ft.
- Chain link lock-up: 5,328 sq. ft.

Fact Sheet

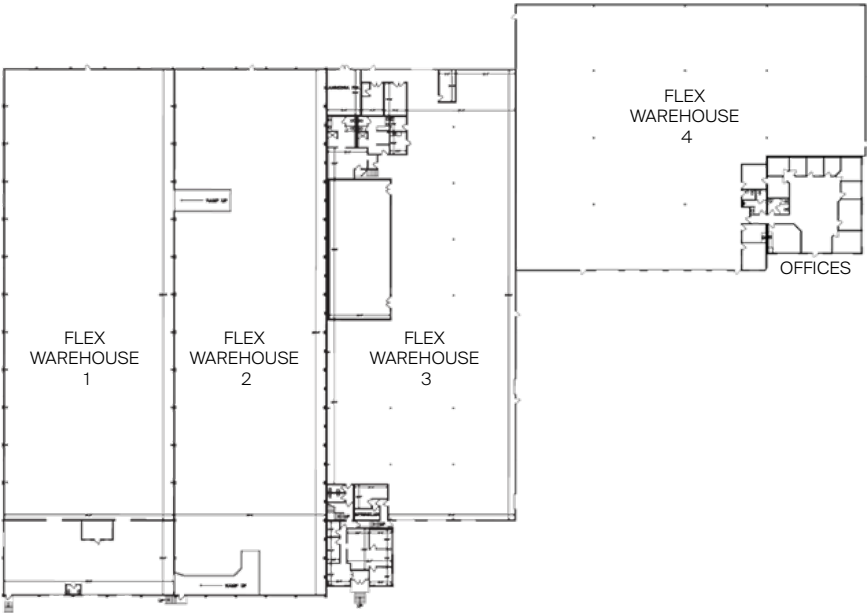


3690 BAINBRIDGE AVE,
BURNABY, BC

- Flex warehouse 1: 25,330 sq. ft.
- Flex warehouse 2: 23,139 sq. ft.
- Flex warehouse 3: 24,633 sq. ft.
- Flex warehouse 4: 21,864 sq. ft.
- Offices: 3,303 sq. ft.

The above figures represent the dimensions of each warehouse at its widest point.

Fact Sheet

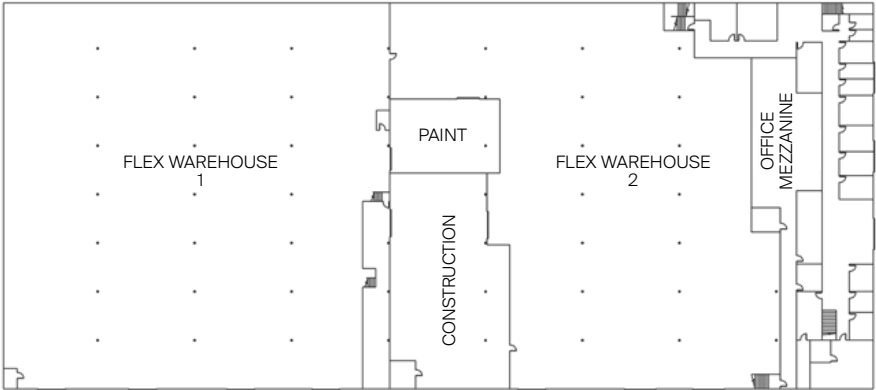


LAKEWOOD

WFW Studios Lakewood provides clients with a 99,750 square feet facility complete with four warehouse flex spaces with clear heights ranging from 21 to 24 feet and column spacing between 47 to 90 feet. The location also includes private offices, a boardroom, and a kitchenette.

RIVERWOOD

WFW Studios Riverwood presents clients with a 97,430 square feet facility complete with two 20 feet clear height warehouse flex spaces with 50 feet column spacing, an office mezzanine, as well as paint and construction workspaces.



18788 96 AVE,
SURREY, BC

- Flex warehouse 1: 39,500 sq. ft.
- Flex warehouse 2: 38,100 sq. ft.
- Paint: 2,100 sq. ft.
- Construction: 6,100 sq. ft.
- Office mezzanine: 12,000 sq. ft.

Fact Sheet



LIGHT UP THE WORLD

Our Lighting, Grip and Power team is the backbone of this business. No set can go without it, and we're proud to say that our inventory is the largest, and best, in all of Canada and the UK. The list is long - HMI, incandescent, LED of various shapes and sizes, Tier 3 generators (Tier 4 coming soon!), green screens, and more feet of cable than you can possibly imagine. **We carry everything you might need** to keep your productions humming through the seasons. If you're looking for more sustainable power solutions, we offer a range of MovieQuiet battery packs from 6kW to 40kW, with 100kW coming soon.

Our entire team is committed to staying on top of the latest equipment innovations to help make every set as clean and green as can be.



TAKE YOUR BEST SHOT



Our Canadian and UK camera departments are like a candy shop designed by and for those who are DPs at heart. The team is truly dedicated to sourcing the **widest range of elite cameras, lenses, and support equipment for our clients' every creative vision.** Our line up features premium quality super 35 and large format cameras from manufacturers including ARRI

and RED and world-renowned lensing from Vantage/Hawk, Leica, Cooke, Masterbuilt, Angenieux and Fujinon, just to name a few. Our full inventory, including an extensive array of camera support equipment, grows by the day and our team is always available to provide custom-tailored recommendations to help you get the most out of your gear.



CRANES, AUTOMOBILES, AND INFLATABLES



WFW's Specialty Equipment team is the Canadian and UK industry's go-to for innovative gear to obtain truly memorable shots. **From jibs, robotics and remote heads to an impressive range of telescopic and modular camera cranes, the latest in stabilised and non-stabilised remote heads, and specialist vehicles (such as the Scarab, Taurus and Gator crane bases, electric motorcycles and the Shadow Tracker, Exo and Phantom electric tracking cars) - we have them all!** We even carry the SuperTechno 100R, the only one of its kind in the world.

WFW is also the exclusive Canadian distributor for Airstar balloon lighting, which provides unique lighting solutions for film and television productions of all sizes.

Our team of technical experts work alongside our clients every step of the way and are known for helping them extract the full potential of each piece of specialty equipment in our inventory.



ON LOCATION

In Canada, Location Equipment Supply has everything that productions need to keep shoot days running smoothly, ranging from must-have director's chairs and state of the art change rooms, to the essentials like portable

bathrooms and traffic cones. We even stock up on **Personal Protection Equipment** that clients have come to rely on to keep productions safe amid the ever-changing environment in which we all operate in.

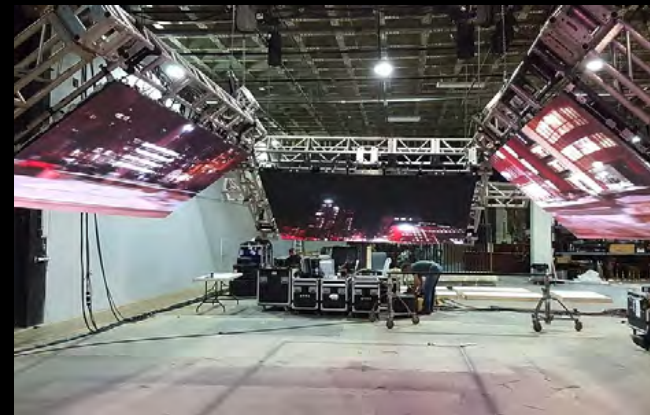


SUNBELT RENTALS



Sunbelt Rentals is constantly advancing the idea of what an equipment rental company can do for its customers, through unmatched solutions, uncompromising safety standards, and continuous innovation. With a passionate team of **22,000 equipment rental experts**, a **growing network of 1,250 locations** throughout **Canada, the US, and UK**, **fleet assets of \$14.2 billion USD**, and an extensive offering of quality equipment available for delivery or pick-up, Sunbelt Rentals helps customers make it happen.

Alongside categories like **stage rigging and scaffolding**, **aerial work platforms**, **temporary fabric structures** and **semi-permanent buildings**, Sunbelt Rentals' comprehensive inventory also features power, HVAC, climate control, flooring, general tools, and other equipment options to service a wide range of markets including commercial, industrial, and the film and television production industry. **Working with WFW, Movietech, Alpha Grip, and PKE** means **direct access to Sunbelt Rentals' best-in-class offerings** to keep productions up and running.



CONTACTS

CANADA

WILLIAM F. WHITE

CAMERA

Vancouver

Amanda D'Silva: adsilva@whites.com
+1 604 253 5050

Toronto

Trevor Huys: thuys@whites.com
+1 416 239 5050

LIGHTING, GRIP + POWER

Vancouver

Kelly Dale: kdale@whites.com
+1 604 253 5050

Calgary & Winnipeg

Randall Plitt: rplitt@whites.com
+1 604 613 4098

Toronto

Rob Mason: rmason@whites.com
+1 416 239 5050

Sudbury

Josh Desormeaux:
jdesormeaux@whites.com
+1 705 885 1242

Halifax

Trevor Sutherland: tsutherland@whites.com
+1 902 450 1284

SPECIALTY EQUIPMENT

Vancouver

Barrie Wells: bwells@whites.com
+1 604 428 2144

Toronto

Mike Cherrington: mcherrington@whites.com
+1 416 239 5050

LES

Vancouver

Jason Cox: jcox@whites.com
wlesvancouver@whites.com
+1 604 253 5050

Toronto

John Doyle: jdoyle@whites.com
wlestoronto@whites.com
+1 416 410 5858

STUDIOS

Alex Godfrey: agodfrey@whites.com
+1 778 891 3466

VIRTUAL PRODUCTION

Edward Hanrahan: ehanrahan@whites.com
+1 778 891 3466

EXPENDABLES (THE STORE)

thestore@whites.com

UNITED KINGDOM & IRELAND

movietech®

CAMERA

London & Cardiff

Dave Palmer: david.palmer@movietech.co.uk

pkelighting

LIGHTING + POWER

Manchester, Cardiff & Belfast

Matt Evans: mattevans@pkelighting.com



SPECIALTY EQUIPMENT

London & Cardiff

bookings@alphagrip.co.uk



A SUNBELT RENTALS
COMPANY