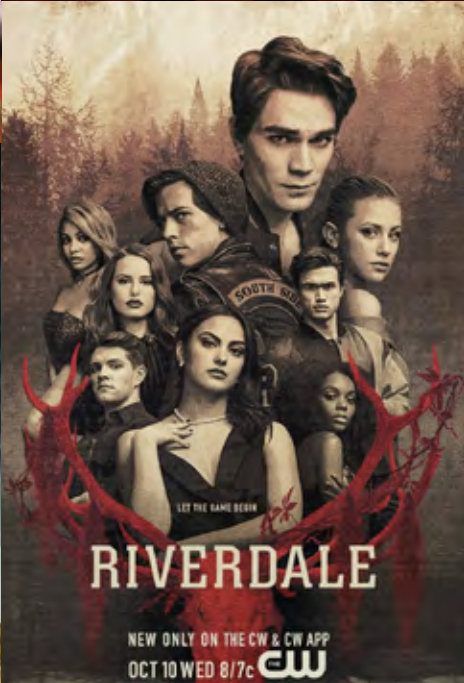
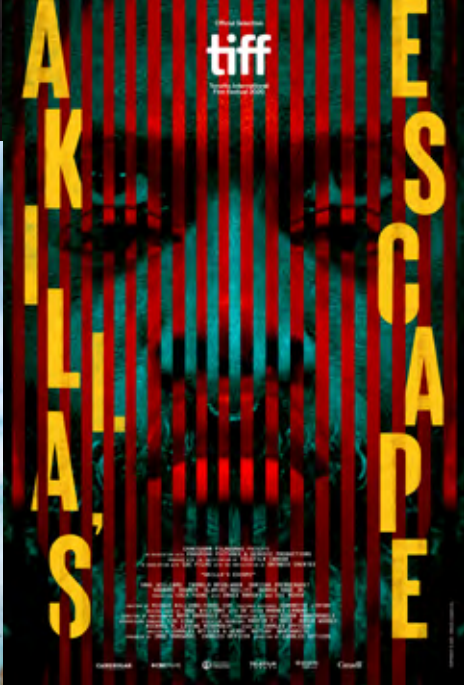


**LIGHTS.
CAMERA.
ACTION.**





ABOUT WILLIAM F. WHITE

WE KNOW CANADA.

Founded in 1963, William F. White International Inc. (WFW), a Sunbelt Rentals Company, is **Canada's largest and most iconic provider of production equipment and studios in the entertainment industry.**

WE'VE GOT YOUR BACK.

WFW is the industry's go-to Partner in Production. With six rental facilities strategically located across Canada, our laser focus is to provide the most comprehensive and technologically advanced rental inventory to producers of all forms of content. From custom-built Studios and Specialty Equipment, to creative necessities including Camera, Lighting and Grip, and Location Equipment Supply we've got you covered.

PART OF YOUR TEAM.

Think of us as your extended production team, we will be there whenever you need us. Rest assured that our crew will go above and beyond to get you what you need. Equally important, our skilled technicians, in-house production experts, and best-in-class maintenance teams will do whatever it takes to keep your production up and running.



WHAT DRIVES US

OUR SHARED PURPOSE

Helping creators tell stories is what drives us every day. It's no surprise that our team is comprised of passionate and experienced technical experts. From glossy high budget projects to home grown Canadian indie storytelling, "moving pictures" is our passion and providing your team with the equipment, studios, and solutions to make the magic of storytelling happen, is our purpose.

VALUES MATTER

Values are important to us, not only do they set us apart from the pack, but these shared values also bring us together. At the end of the day, it's these principles that we strive to live by in our everyday lives and what we turn to in the face of adversity.

PUT PEOPLE FIRST

We support and respect our team, clients, and community before anything else.

DO WHAT WE SAY

We act with integrity and follow through on our commitments.

FOSTER EXCELLENCE

We engage and empower great people to do great things.

SUPPORT OUR COMMUNITIES

We work with our industry partners to build safe, healthy, inclusive, and sustainable communities.

OUR COVID PROTOCOLS



The safety of our staff, our families, and our community remains our top priority. Our operations exceed all guidelines set by the government and our offices continue to remain open, while strictly adhering to existing safety protocols.

We offer a wide variety of **personal protective equipment offerings**, ranging from face masks to portable air scrubbers. The personal products can be purchased through our Expendables locations and rentable equipment is available through our Location Equipment Supply locations.

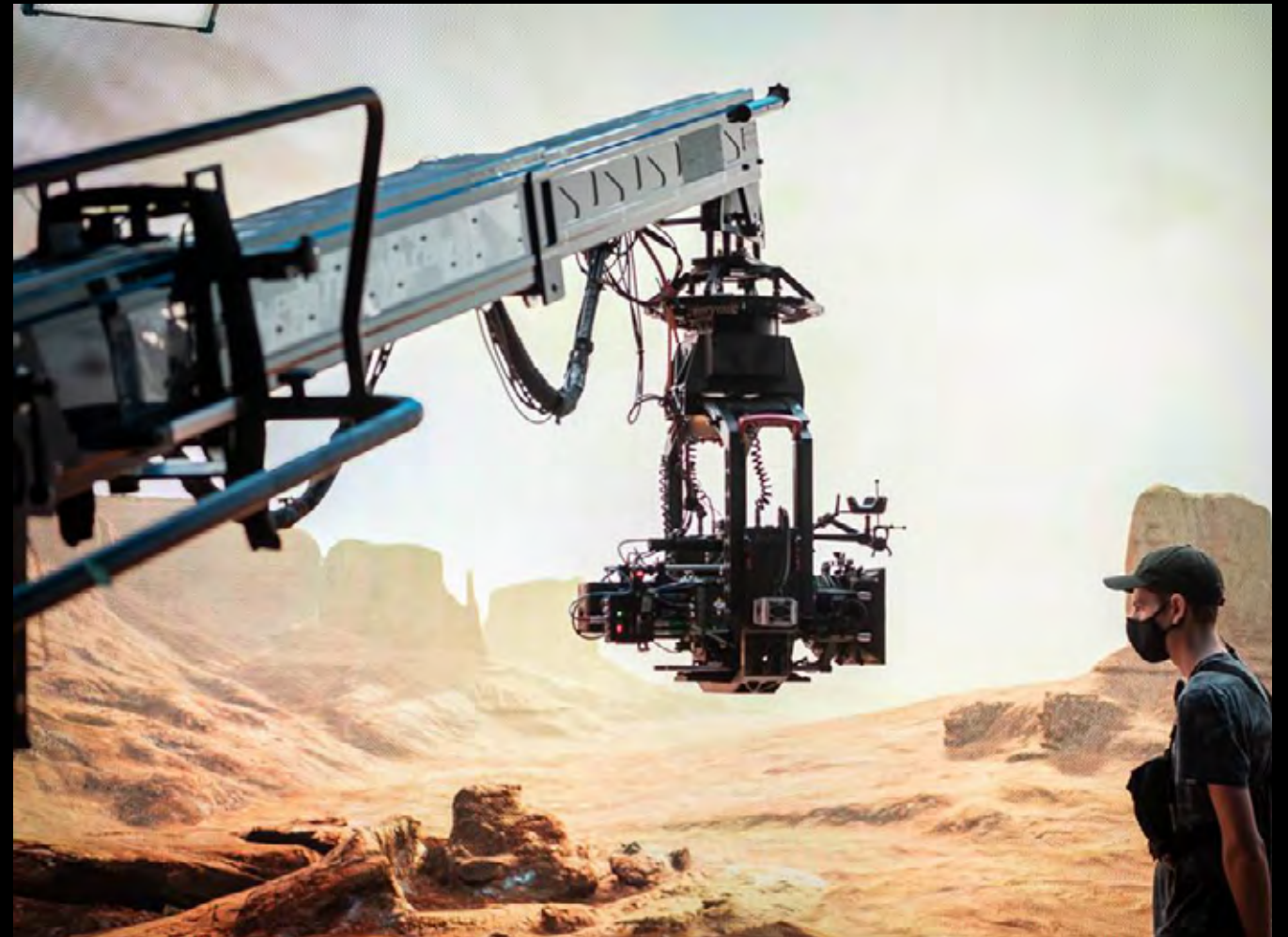
All equipment provided by any of our operations is verified by us to be sanitized and safe for use when equipment passes to your production. In consultation with the industry and our manufacturing partners, we've developed a comprehensive set of sanitizing protocols for all equipment provided by us. We've also created a series of online instructional equipment disinfection guide videos that crews can use to keep themselves safe on set.

Click here to view our [PPE offerings](#).

Watch our [instructional equipment disinfection guide videos](#).

WHAT WE DO

VIRTUAL PRODUCTION STUDIOS LIGHTING, GRIP + POWER CAMERA SPECIALTY EQUIPMENT LOCATION EQUIPMENT SUPPLY



CREATE YOUR VIRTUAL WORLD IN STUDIO

WFW is deeply committed to virtual production as an integral part of the future of filmmaking. Our partnership with Academy and Emmy award-winning visual effects giant, Pixomondo (PXO), in collaboration with our technology partners Brompton Technology, Epic Games, Lenovo, NVIDIA, and ROE Visual, present clients with unique opportunities to create entire virtual worlds in studio.

Unlike our traditional studio offerings, virtual production allows filmmakers to utilize a combination of live action and cutting-edge digitally created environments rendered in real time on LED walls and ceilings (known as “volumes”) to deliver a production experience unlike any other. With this new technology, clients are able keep costs down, increase creative control, reduce their carbon footprint, and provide an interactive experience for cast and crew.

Notable productions like Disney’s *The Mandalorian* and CBS’s *Star Trek: Discovery* have already taken full advantage of this burgeoning technology to create incredible high-fantasy, science fiction worlds all while inside a studio.

Learn more about virtual production and why it has the potential to revolutionize the film and television industry.



VOLUME 1

Designed for features and television series, our first virtual production volume opened in early 2021 and is located in West Toronto.

TORONTO, ON

Stage: 20,000 sq. ft.

LED volume: 7,000 sq. ft.

Shape: Horseshoe (70' across)

Ceiling height: 23'6"

ROE LED-BP2 wall panels: 1800

ROE LED-CB5S ceiling panels: 650



VOLUME 2

Located in Stage 6 at Studio City's recently completed development in the Port Lands district of the city's downtown core, this volume is designed for shorter duration projects including film and television productions, as well as commercials that only require the space for a limited amount of time – days, weeks, or months.

TORONTO, ON

Stage: 16,100 sq. ft.

LED volume: 2,000 sq. ft.

Shape: Semi-circle (62' across)

Ceiling height: 20'4"

(articulating ceiling sections)

ROE LED-BP2 wall panels: 720

ROE LED-CB5S ceiling panels: 175



VOLUME 3

Our first west coast-based virtual production offering is one of the largest volumes in the world and was constructed in the shape of a circle to provide content creators with 310-degrees of LED screens. This volume has been designed to service features and television series.

VANCOUVER, BC

Stage: 22,000 sq. ft.

LED volume: 7,750 sq. ft.

Shape: Circle (80' across, 310°)

Ceiling height: 27'6"

ROE LED-BP2 wall panels: 2500

ROE LED-CB5S ceiling panels: 760

VOLUME 4

This 7,000 square-foot volume, scheduled for completion in early 2022, is designed for features and television series.

LOS ANGELES, CA

Stage: 20,000 sq. ft. (approx.)

LED volume: 7,000 sq. ft.

Shape: Horseshoe (70' across)

Ceiling height: 23'6"

ROE LED-BP2 wall panels: 1800

ROE LED-CB5S ceiling panels: 650



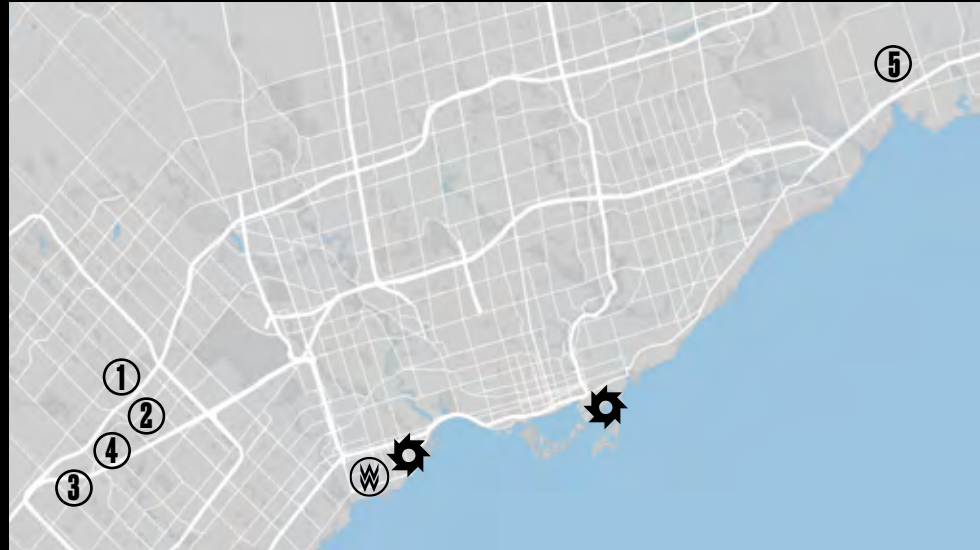
STUDIOS THAT MATCH YOUR AMBITION

WFW operates a growing portfolio of state-of-the-art production studios in the **Vancouver, Calgary, and Toronto area** that can handle projects of any size. With over 30 sound stages and ample mixed-use high-ceiling warehouse space spread across our **twelve studio facilities**, WFW now manages over **1.4 million square feet of production-ready studio space**. In addition to our studio spaces, we recently added a 23-acre Backlot to our roster, complete with 30 storefronts and five interior sets all designed to look like a generic, modern North American town.

Our studios offer strategic locations featuring support areas and workshops within the facilities as well as ample crew and base camp parking. Individual studios are equipped with various technical amenities such as the latest in fibre-optic connectivity, creating a modern and comfortable turnkey work environment. All other WFW services are also within short driving distances of each studio facility.



TORONTO



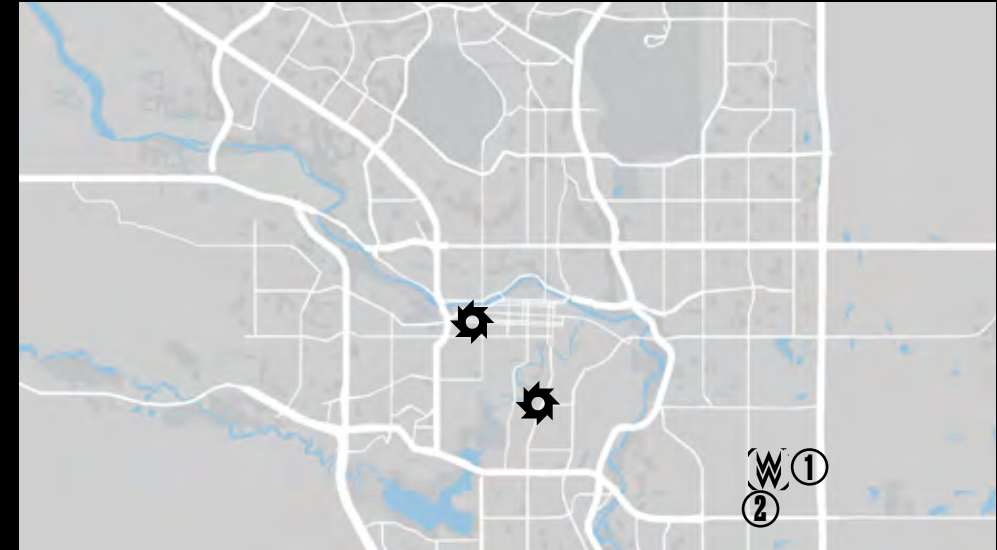
- William F. White International Inc.
- Downtown Toronto
- Sunbelt Rentals
- Edwards Blvd. Studio
- Heritage Studio
- Century Studio
- Legacy Studio
- WFW Backlot
- Pearson International Airport

VANCOUVER



- William F. White International Inc.
- Downtown Vancouver
- Sunbelt Rentals
- Vancouver International Airport
- Ironwood Studio
- Fraserwood Studio
- Copperwood Studio
- Creekwood Flex Space
- Lakewood Flex Space
- Riverwood Flex Space

CALGARY

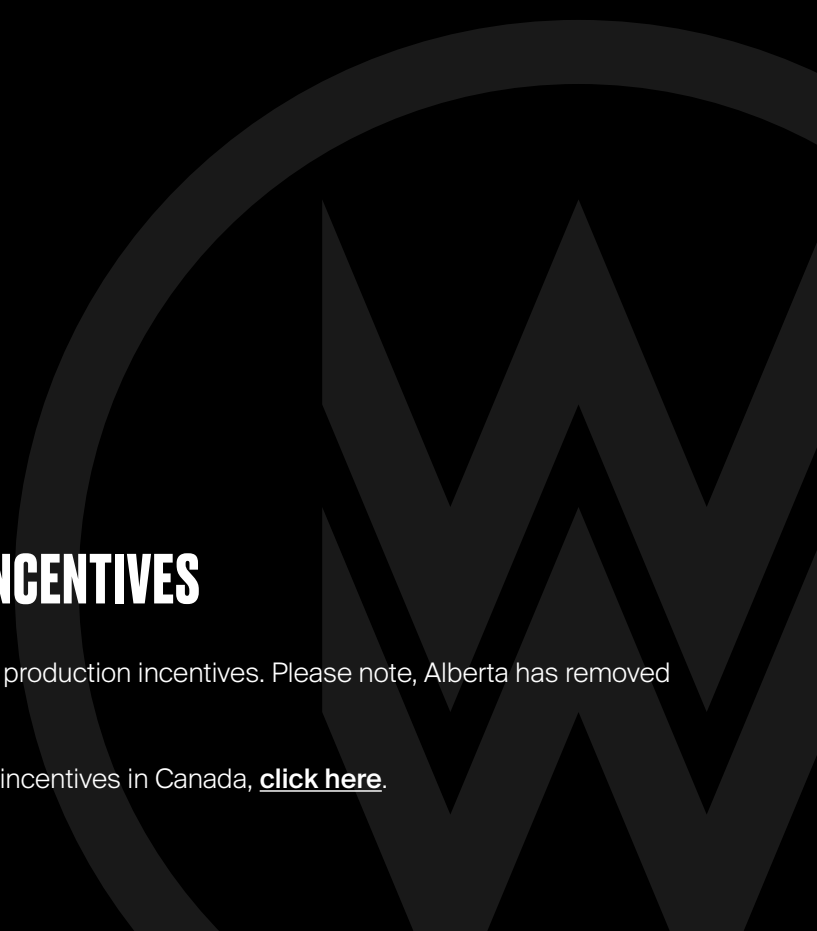


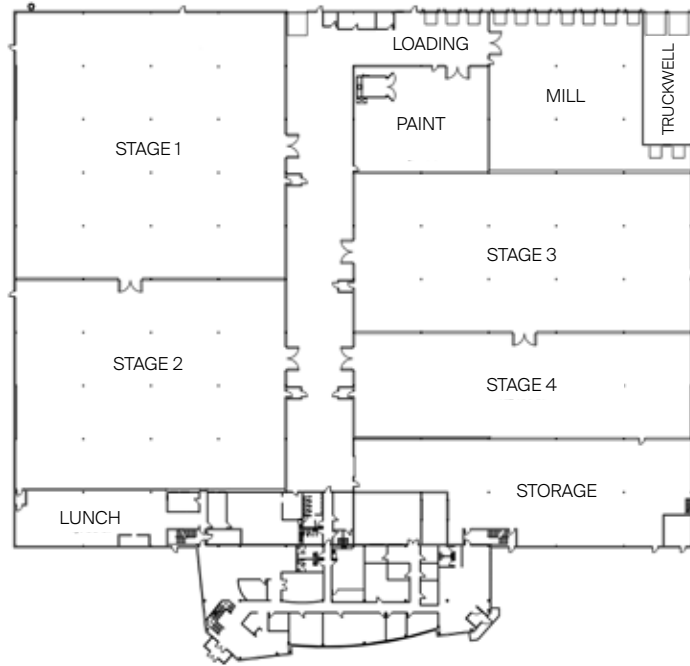
- William F. White International Inc.
- Downtown Calgary
- Sunbelt Rentals
- Fortress Studio
- Fortress+ Support
- Calgary International Airport

CANADIAN PRODUCTION INCENTIVES

Every province in Canada offers their own production incentives. Please note, Alberta has removed its \$10M project cap.

For up-to-date information on production incentives in Canada, [click here](#).





**6115 EDWARDS BOULEVARD,
MISSISSAUGA, ON**

- Stage 1:** 24,800 sq. ft. (160' x 155')
- Stage 2:** 20,000 sq. ft. (160' x 125')
- Stage 3:** 18,400 sq. ft. (198' x 93')
- Stage 4:** 12,400 sq. ft. (198' x 63')
- Mill:** 11,100 sq. ft.
- Paint:** 4,900 sq. ft.
- Production offices:** 21,545 sq. ft.
- Storage:** 10,240 sq. ft.
- Lunch:** 4,700 sq. ft.



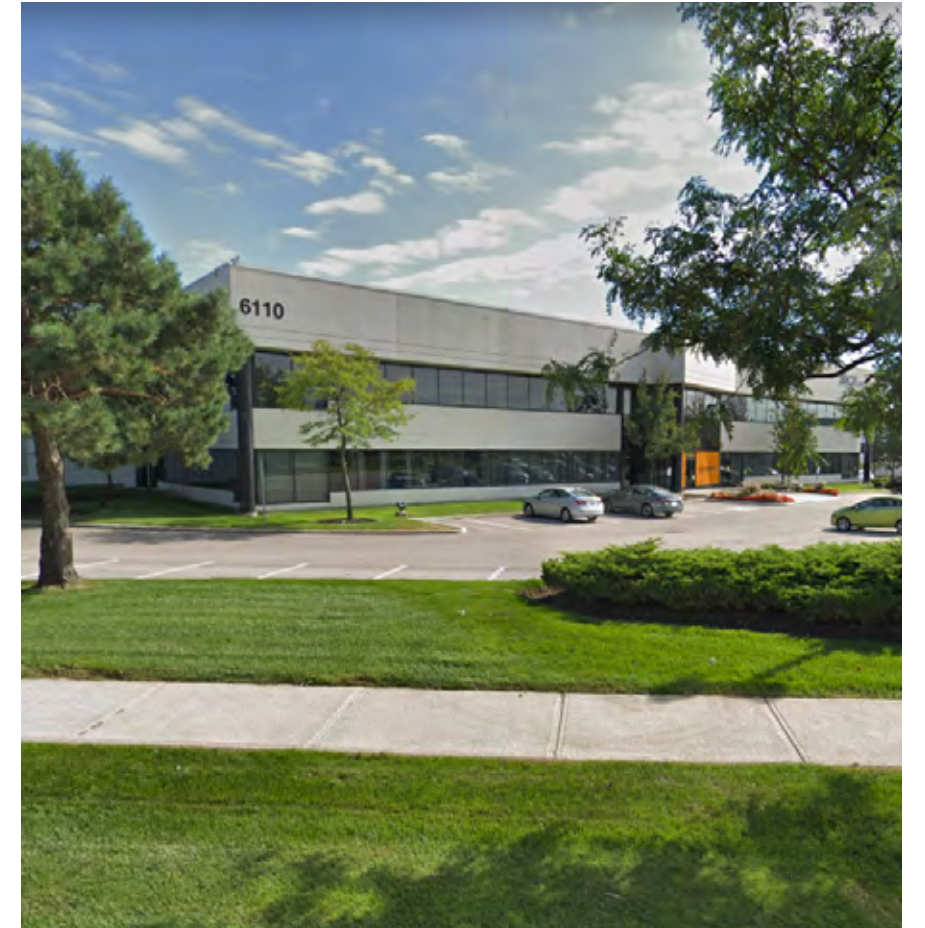
EDWARDS BLVD.

Edwards Blvd. Studio offers 151,130 square feet of production-ready space, with 40 feet in column spacing in the stages, and 28 feet clear height throughout the building.

Edwards Blvd. houses four sound stages as well as a mill shop, paint shop, two floors of departmental offices, and ample storage space.

HERITAGE

Heritage Studio provides clients with a 181,000 square foot facility complete with four stages, two offices, and double the construction space for wardrobe, set dec, props, paint, mill, and lockups. It has 39 feet in column spacing in the stages, with a ceiling height of 30 feet.

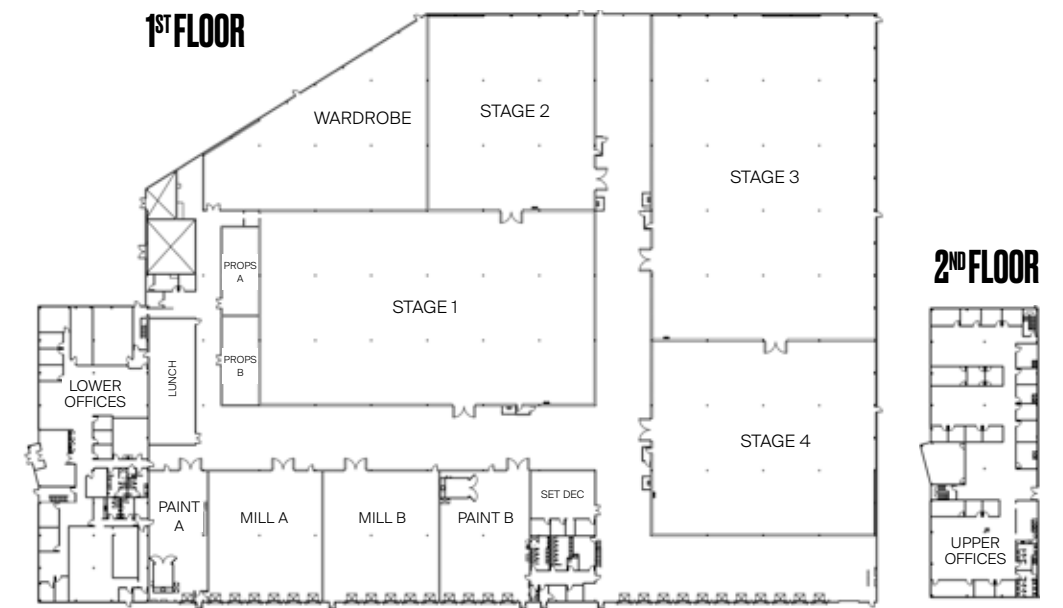


**6110 CANTAY RD,
MISSISSAUGA, ON**

- Stage 1:** 24,840 sq. ft.
- Stage 2:** 12,558 sq. ft.
- Stage 3:** 27,364 sq. ft.
- Stage 4:** 16,160 sq. ft.

- 1st Floor Offices:** 12,500 sq. ft.
- 2nd Floor Offices:** 12,500 sq. ft.
- Lunch:** 2,200 sq. ft.

- Wardrobe:** 9,196 sq. ft.
- Set Dec:** 1,155 sq. ft.
- Props A:** 1,226 sq. ft.
- Props B:** 1,226 sq. ft.
- Paint A:** 2,800 sq. ft.
- Paint B:** 4,390 sq. ft.
- Mill A:** 5,600 sq. ft.
- Mill B:** 5,600 sq. ft.



CENTURY

Century Studio offers clients 68,000 square feet of production space, with a clear height of 32 feet and 52 feet in column spacing. The facility has a large art department, set dec and prop lockups, green rooms, client lounges, and dressing rooms. It features 24/7 security, double loading bay doors, heating, ventilation, and more.



**7030 CENTURY AVENUE
 MISSISSAUGA, ON L5N 2V8**

Stage: 33,000 sq. ft.
Office Space: 18,000 sq. ft.
Costume & Wardrobe: 5,000 sq. ft.
Support Space: 12,000 sq. ft.

LEGACY

Legacy Studio is our latest Toronto property due to come online in early 2022.



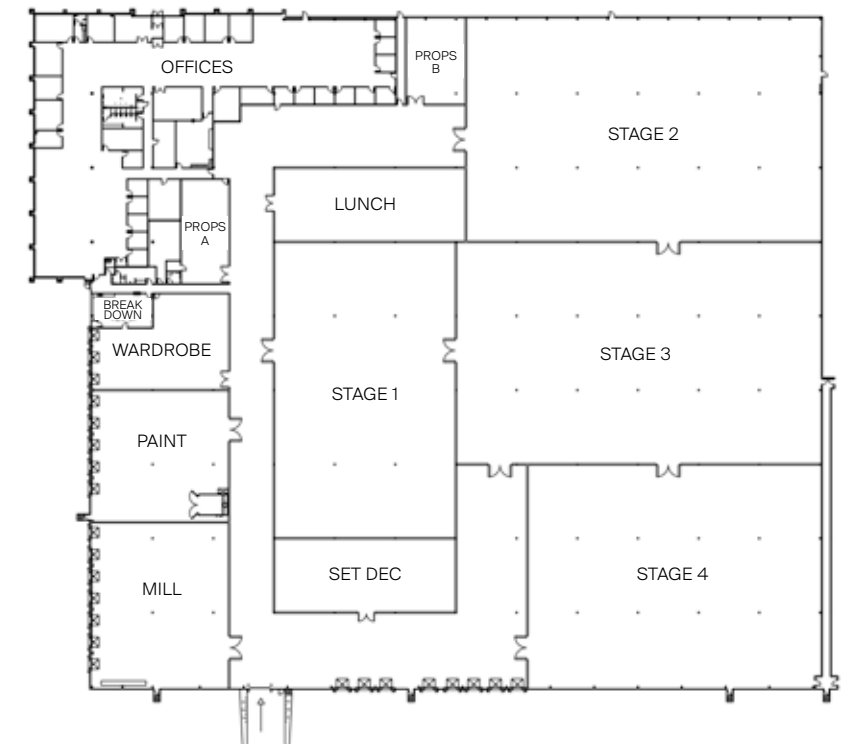
**6200 CANTAY ROAD,
 MISSISSAUGA, ON**

Building Specs:
Stage 1: 18,500 sq. ft.
Stage 2: 27,500 sq. ft.
Stage 3: 28,000 sq. ft.
Stage 4: 22,500 sq. ft.

Total Stage: 96,500 sq. ft.

Main Offices: 20,400 sq. ft.
Props A: 1,500 sq. ft.
Props B: 1,700 sq. ft.
Lunch: 4,500 sq. ft.
Wardrobe: 3,700 sq. ft.
Break Down: 420 sq. ft.
Paint: 5,200 sq. ft.
Mill: 8,300 sq. ft.
Set Dec: 4,500 sq. ft.

Total Facility Space: 180,917 sq. ft.



BACKLOT

WFW's latest studio offering and first backlot is located in the City of Pickering, north of downtown Toronto. The 23-acre, modern day small town is situated on a 90-acre plot of land and has been purposefully built for features, TV series and commercials. In addition to the 30 stores and shops currently on the property, the town is easily expandable and can be converted to suit productions of all types, from rustic western settings to bustling New York City streets.

PICKERING, ON

Town: 23 acres

Property: 90 acres

Property type: Farmland

Buildings (interior sets):

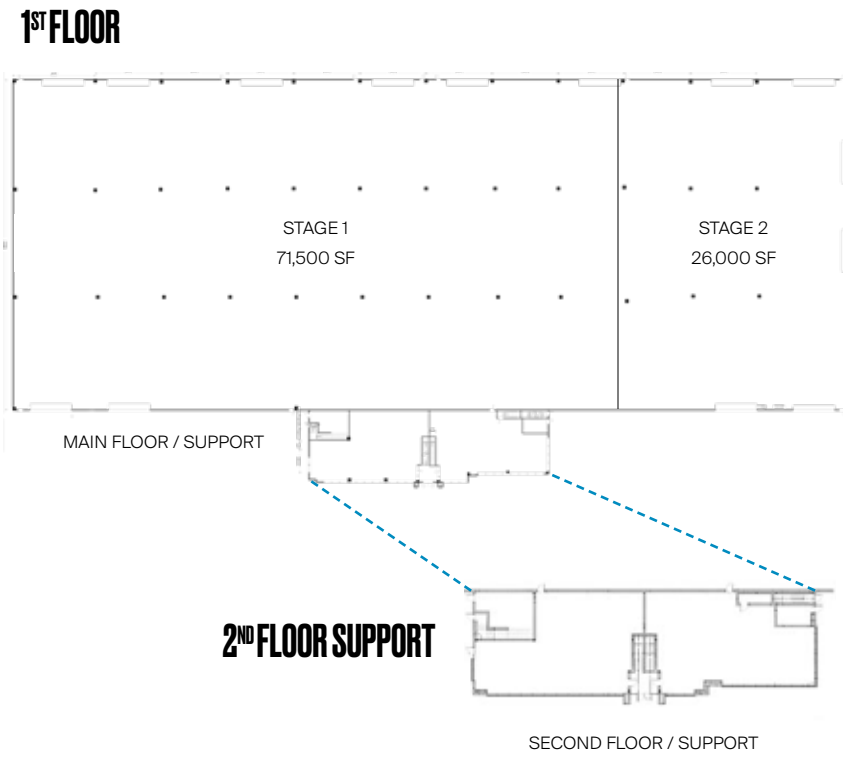
- Diner
- Town Hall
- Town Square
- Gas Station
- Police Station

[Media Gallery](#)



FORTRESS

Fortress Studio is 5 minutes away from Fortress+ Support, the Calgary Film Centre, WFW, and a large outdoor green space. It provides Calgary clients with over 95,000 square feet of stage space with a clear height of 36 feet, and 65 feet in column spacing. The facility is on 11.85 acres, and it boasts drive-through loading, ample parking, and two make-up air systems with 100,000 CFM capacity each.



6740-76 AVENUE SE,
CALGARY, AB

Stage: 71,500 sq. ft.
Stage/Support: 26,000 sq. ft.
Main Floor/Support: 5,800 sq. ft.
Second Floor/Support: 5,800 sq. ft.
Total Stage: 97,500 sq. ft.
Total Facility Space: 109,100 sq. ft.

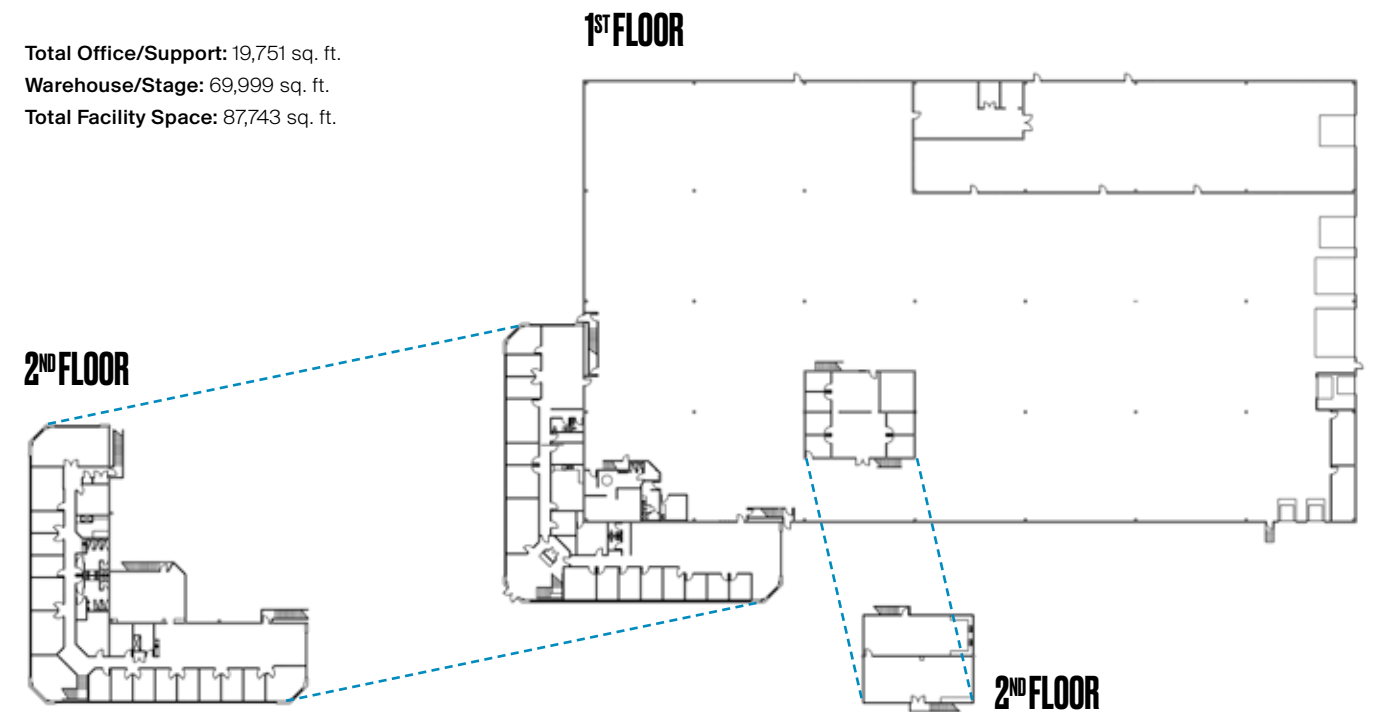
FORTRESS+

Fortress+ Support is five minutes away from Fortress Studio, the Calgary Film Centre, and WFW. It offers Calgary clients an additional 69,999 square feet of support space with column spacing of 46 feet, and 28 to 29 feet of clear height. The facility also offers almost 20,000 square feet of office space, featuring over 30 private offices, two large boardrooms, open workspaces, a full kitchen, and an additional kitchenette for use.



5616-80 AVENUE SE,
CALGARY, AB

Total Office/Support: 19,751 sq. ft.
Warehouse/Stage: 69,999 sq. ft.
Total Facility Space: 87,743 sq. ft.

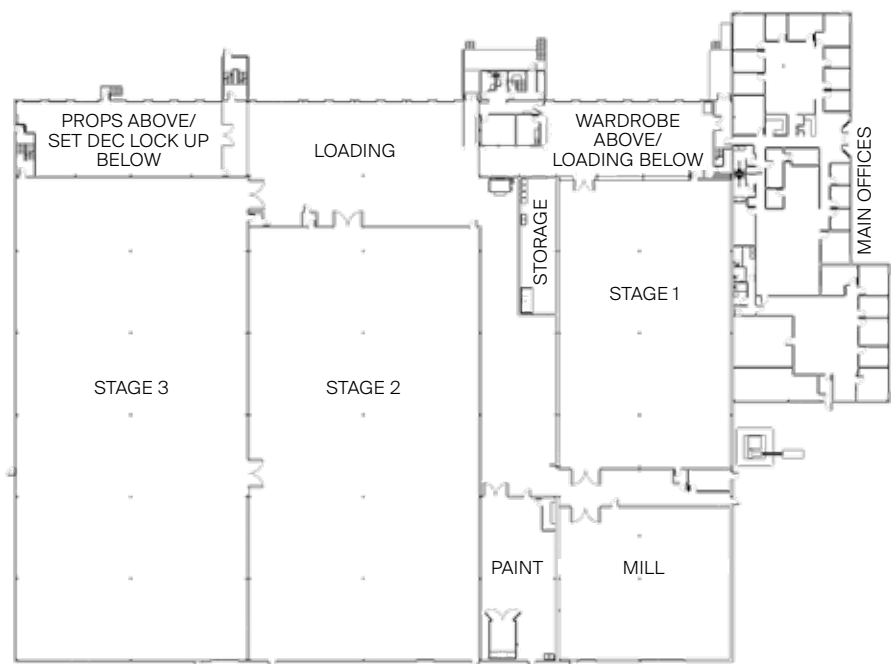




COPPERWOOD

WFW Studios Copperwood is a 106,000 square feet premium, 31 feet clear height, and 52 feet column spacing, full-service facility located in Richmond.

The space provides clients with three large, engineered sound stages, mill shop and paint shop, additional support space, along with ample circus and crew parking. All offices are equipped with fibre-optic services and are fully furnished, providing a modern and comfortable turn-key work environment.

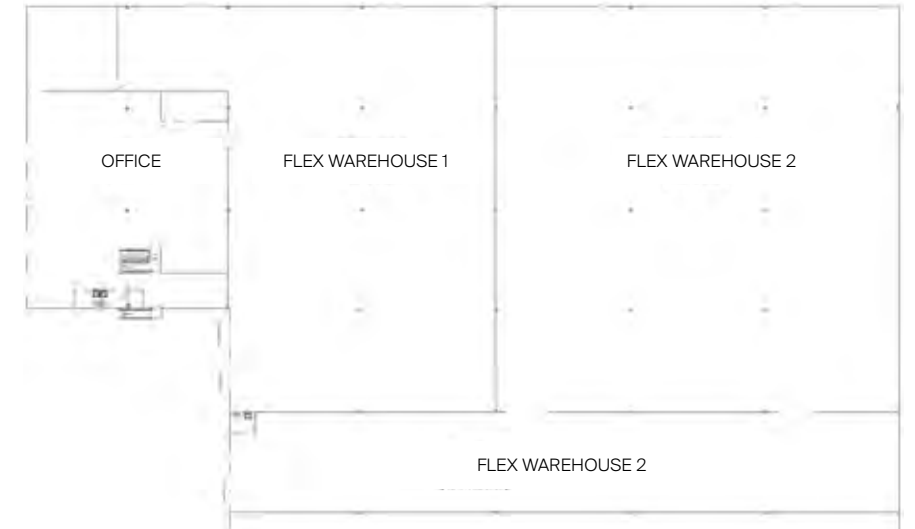


12211 Horseshoe Way,
Richmond, BC

- Stage 1:** 10,140 sq. ft. (130' x 78')
- Stage 2:** 21,525 sq. ft. (205' x 105')
- Stage 3:** 23,415 sq. ft. (223' x 105')
- Mill:** 5,800 sq. ft.
- Paint:** 2,800 sq. ft.
- Production offices:** 11,580 sq. ft.
- Wardrobe:** 3,977 sq. ft.
- Props:** 3,977 sq. ft.
- Set dec lock-up:** 3,977 sq. ft.

3819 STILL CREEK AVE,
BURNABY, BC

- Flex 1:** 10,320 sq. ft. (86' x 120')
- Flex 2:** 14,400 sq. ft. (120' x 120')
- Flex 3:** 5,920 sq. ft. (198' x 29'8")
- Office:** 5,631 sq. ft.



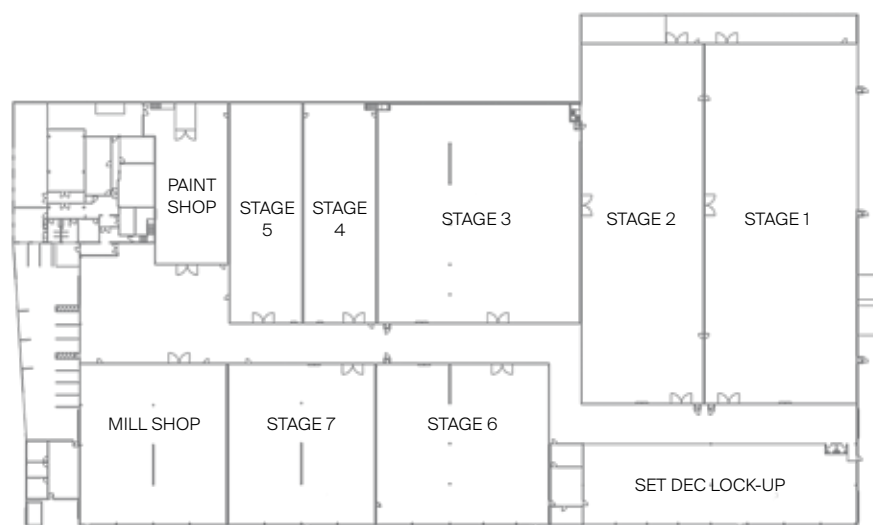
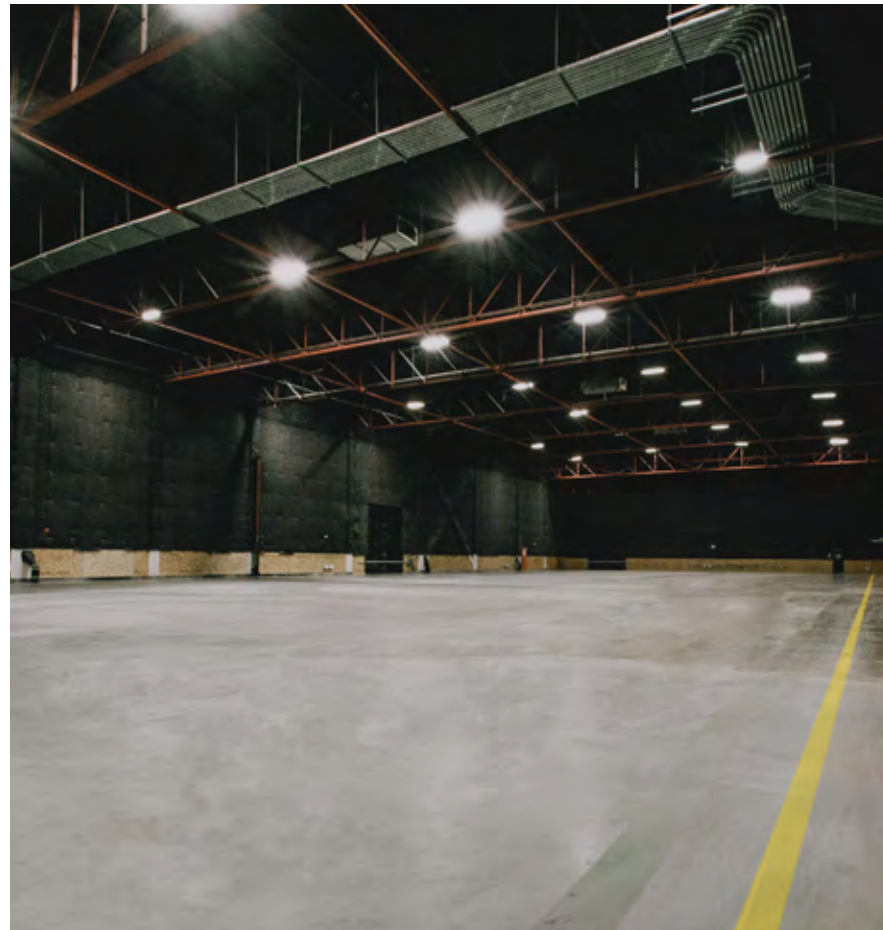
CREEKWOOD

Creekwood Studio is a multipurpose flex space with 36,000 square feet including 5,600 square feet of office space. It features 23 feet clear ceiling height and 45 feet clear span of column spacing. This property includes three dock doors (two docks and one drive up) and 22 designated parking stalls with access to additional parking.

The studio is a 40-minute drive to YVR International Airport and only 15 minutes to William F. White International.

IRONWOOD

Across 177,000 square feet of production-ready space, WFW Studios Ironwood boasts ceilings of 27 to 31 feet clear height and 25 feet to clear span of column spacing throughout the facility. Ironwood has seven sound stages as well as a mill shop, a paint shop, departmental offices, boardrooms, and script-reading rooms. Ironwood's fully furnished production offices come equipped with 10 GB fibre-optic service. In addition, the sound stages are equipped with state-of-the-art fibre that complements motion capture and VR systems.

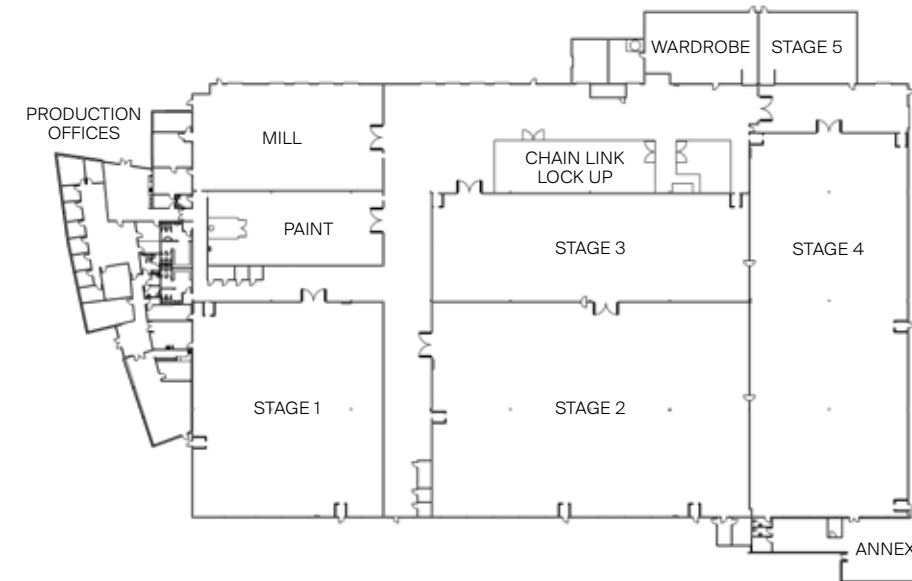


**888 SE MARINE DRIVE,
VANCOUVER, BC**

- Stage 1:** 24,888 sq. ft. (244' x 102')
- Stage 2:** 20,008 sq. ft. (244' x 82')
- Stage 3:** 20,711 sq. ft. (149' x 139')
- Stage 4:** 7,301 sq. ft. (49' x 149')
- Stage 5:** 7,301 sq. ft. (49' x 149')
- Stage 6:** 12,870 sq. ft. (110' x 117')
- Stage 7:** 10,890 sq. ft. (110' x 99')
- Mill shop:** 10,670 sq. ft. (97' x 110')
- Paint shop:** 5,341 sq. ft. (49' x 109')
- Main offices (2nd floor):** 8,355 sq. ft.
- Lower offices:** 8,355 sq. ft.
- Classroom:** 1,500 sq. ft.
- Set dec lock-up:** 10,000 sq. ft.

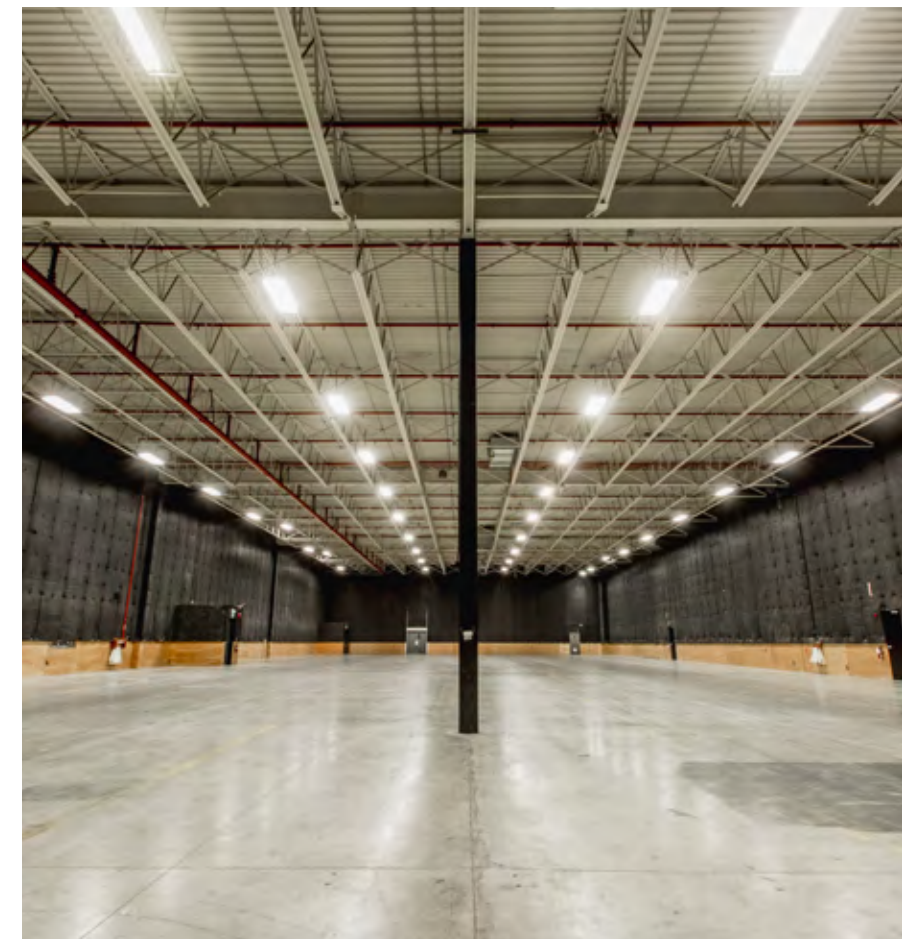
FRASERWOOD

WFW Studios Fraserwood offers 25 feet clear height ceilings and 45 feet to clear span column spacing, with five sound stages, a mill shop, a paint shop and additional support areas across 119,000 square feet of production-ready space. The studio is located 30 minutes from downtown. Fully furnished production offices with fibre-optic connectivity make for a modern turnkey work environment.



**22031 FRASERWOOD WAY,
RICHMOND, BC**

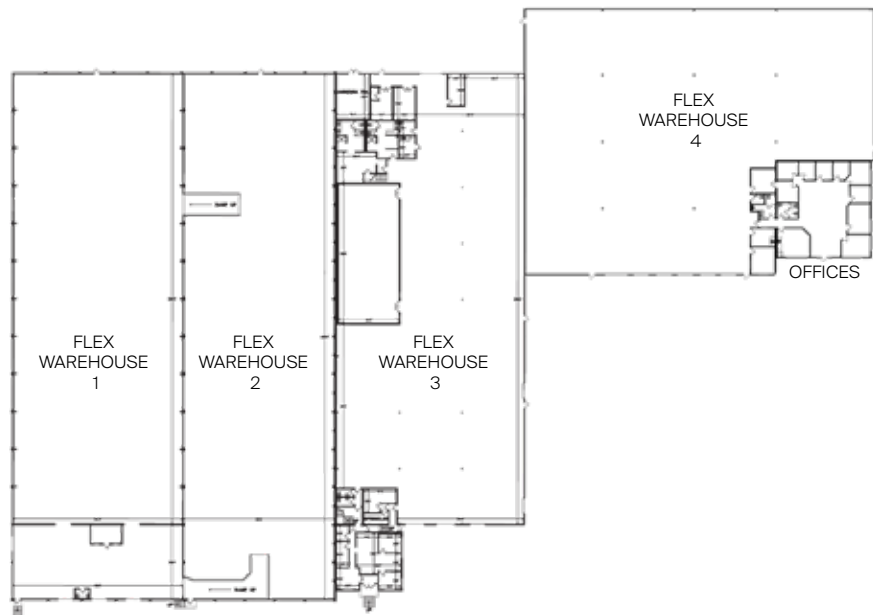
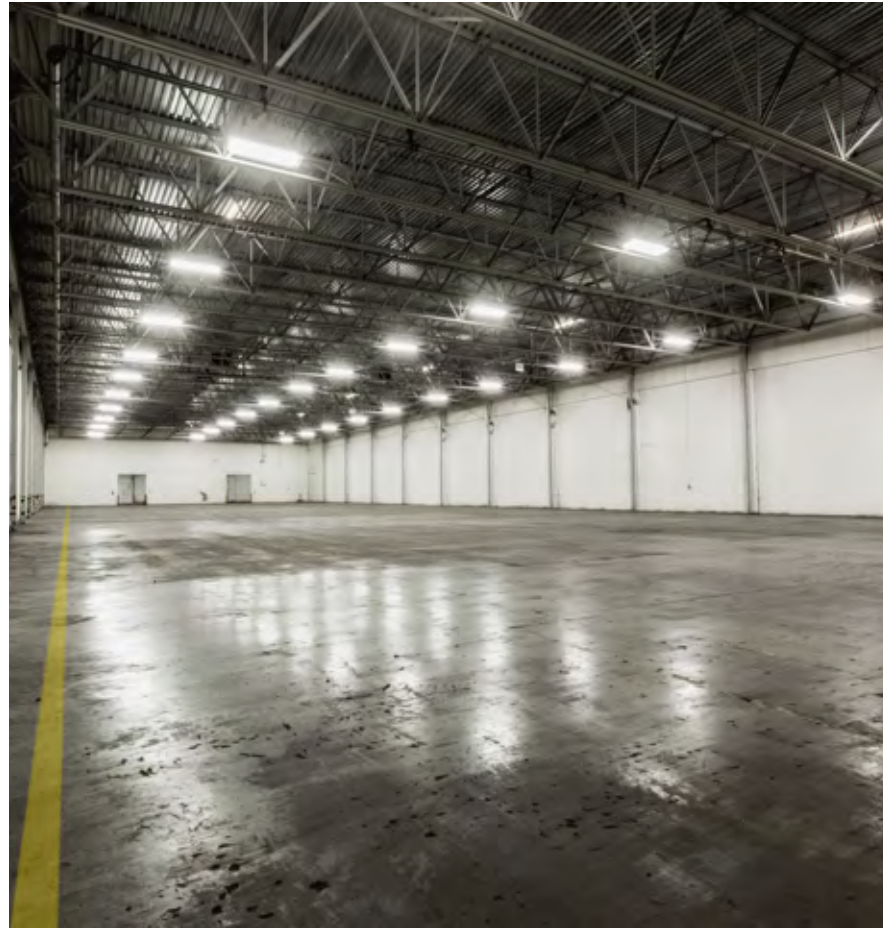
- Stage 1:** 14,760 sq. ft. (120' x 123')
- Stage 2:** 22,263 sq. ft. (181' x 123')
- Stage 3:** 10,860 sq. ft. (181' x 60')
- Stage 4:** 20,700 sq. ft. (90' x 230')
- Stage 5:** 2,350 sq. ft. (55' x 40')
- Mill:** 7,200 sq. ft.
- Paint:** 5,200 sq. ft.
- Production offices:** 9,200 sq. ft.
- Annex:** 3,200 sq. ft.
- Wardrobe:** 2,600 sq. ft.
- Chain link lock-up:** 5,328 sq. ft.



**3690 BAINBRIDGE AVE,
BURNABY, BC**

- Flex warehouse 1:** 25,330 sq. ft.
- Flex warehouse 2:** 23,139 sq. ft.
- Flex warehouse 3:** 24,633 sq. ft.
- Flex warehouse 4:** 21,864 sq. ft.
- Offices:** 3,303 sq. ft.

The above figures represent the dimensions of each warehouse at its widest point.

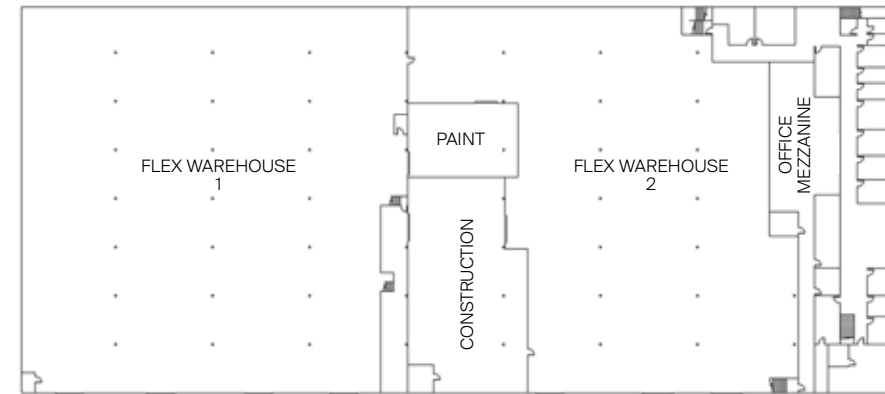


LAKWOOD

WFW Studios Lakewood provides clients with a 99,750 square feet facility complete with four warehouse flex spaces with clear heights ranging from 21 to 24 feet and column spacing between 47 to 90 feet. The location also includes private offices, a boardroom, and a kitchenette.

RIVERWOOD

WFW Studios Riverwood presents clients with a 97,430 square feet facility complete with two 20 feet clear height warehouse flex spaces with 50 feet column spacing, an office mezzanine, as well as paint and construction workspaces.



**18788 96 AVE,
SURREY, BC**

- Flex warehouse 1:** 39,500 sq. ft.
- Flex warehouse 2:** 38,100 sq. ft.
- Paint:** 2,100 sq. ft.
- Construction:** 6,100 sq. ft.
- Office mezzanine:** 12,000 sq. ft.



LIGHT UP THE WORLD

Our Lighting, Grip and Power team is the backbone of this business. No set can go without it, and we're proud to say that our inventory is the largest, and best, in all of Canada. The list is long- HMI, incandescent, LED of various shapes and sizes, Tier 3 generators, green screens, and more feet of cable than you can possibly imagine. **We carry everything you might need** to keep your productions humming through the seasons, from the rain and sleet of the Pacific Northwest to the bright skies of the Atlantic summers. And if you're looking for more sustainable power solutions, our entire team is committed to staying on top of the latest equipment innovations to help make every set as clean and green as can be.



TAKE YOUR BEST SHOT



Our Camera department is like a candy shop designed by and for those who are DPs at heart. The team is truly dedicated to sourcing the **widest range of elite cameras, lenses and support equipment for our clients' every creative vision**. Our line up features premium quality super 35 and large format cameras from manufacturers including ARRI

and RED and world-renowned lensing from Vantage/Hawk, Leica, Cooke, Masterbuilt, Angenieux and Fujinon, just to name a few. Our full inventory, including an extensive array of camera support equipment, grows by the day and our team is always available to provide custom-tailored recommendations to help you get the most out of your gear.



CRANES, ROBOTICS AND AUTOMOBILES



WFW's Specialty Equipment team is the industry's go-to for innovative gear to obtain truly memorable shots. From jibs and remote heads to the **largest inventory of telescoping cranes in the country**, we even carry the SuperTechno 100R, the only one of its kind in the world. Our team specializes in custom built camera cars and we get fired up about electric vehicles, off-road cars and motorcycles that boast multiple camera platforms. We're known for our expert technicians who help clients extract the full potential of every specialty equipment in our inventory.



ON LOCATION

WFW Location Equipment Supply (LES) has everything that productions need to keep shoot days running smoothly. With locations in both Vancouver and Toronto, our LES inventory is impressively wide-ranging from must-have director's chairs and state of the art change rooms,

to the essentials like portable bathrooms and traffic cones. We even stock up on **Personal Protection Equipment** that clients have come to rely on to keep productions safe amid the ever-changing environment in which we all operate in.



SUNBELT RENTALS



Our parent company Sunbelt Rentals is constantly advancing the idea of what an equipment rental company can do for its customers, through unmatched customer solutions, uncompromising customer safety, and continuous innovation. With a passionate **team of 15,000+ equipment rental experts, a growing network of 975+ locations** throughout Canada and the US and an extensive offering of quality equipment available for pick-up or delivery, Sunbelt Rentals helps customers make it happen. From lifts to help you reach greater heights to air scrubbers that keep your set sanitized throughout the day, working with WFW means direct access to all that Sunbelt has to offer to keep your production up and running.



MAKING AN IMPACT

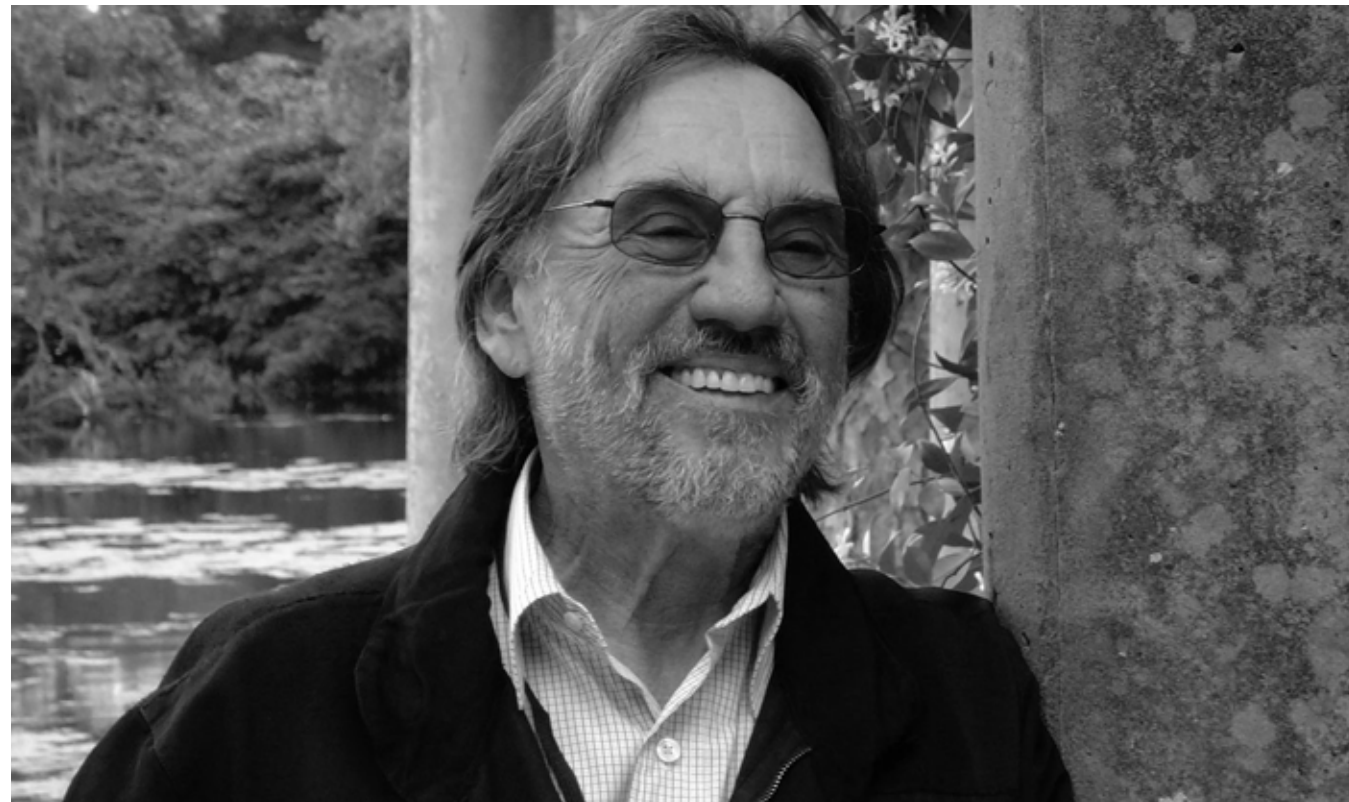
At WFW, we recognize that we can only ever be as strong as the community in which we exist. We are taking actionable steps to support and nurture our industry in the places where we operate our businesses, with the hope that we are making a positive impact on our society at large.

Through ongoing partnerships and mentorship programs with organizations like Women in Film

and Television, Black Women Film! Canada, and Whistler Film Festival's Indigenous Filmmaker Fellowship, among others, we have been and are continuing to create opportunities to amplify diverse voices and diverse stories in the industry. Furthermore, we are committed to providing opportunities for promising young visionaries through our annual Vilmos Zsigmond Cinematography Scholarship and the Comweb/

WFW Jay Switzer Indigenous Creator Scholarship.

Additionally, we support POV Film, a Canadian organization created to provide youth from underrepresented communities with training, job placement, and professional development opportunities in the production industry.



THE TRIPLE BOTTOM LINE.

William F. White International Inc. is deeply aware of the challenges that face the world arising from climate change and the degradation of natural environments. As a part of an international industry, we have an opportunity to demonstrate sound environmental stewardship, and at the same time contribute to the sustainability of our business through a focus on the triple bottom line:

1. **Environmental** - taking practical measures to reduce the environmental impact of our company;
2. **Social** - the satisfaction and pride (and increased engagement) we all realize in "doing the right thing";
3. **Financial** - the demonstrable savings that can be realized through efficiency and better environmental standards.



SAY HELLO.

Find us in six locations across Canada.

VANCOUVER (PST)

100-8363 Lougheed Highway
Burnaby, BC V5A 1X3
Hours: Mon-Fri, 8am-5pm PT
Tel: +1 604 253 5050
After-hours Emergencies: +1 604 838 2747
Randall Plitt: rplitt@whites.com

Specialty Equipment—Western Canada
3555 Bainbridge Avenue
Burnaby, BC V5A 2T3
Hours: Mon-Fri, 8am-5pm PT
Tel: +1 604 428 2144
Barrie Wells: bwells@whites.com

LES Vancouver
3975 Kitchener Street
Burnaby, BC V5C 3L9
Hours: Mon-Fri, 8am-7pm PT
Tel: +1 604 436 1418
Fax: +1 604 436 1461
Email: wlesvancouver@whites.com
Jason Cox: jcox@whites.com

CALGARY (MST)

Calgary Film Centre
5750 76th Avenue SE, Unit 50
Calgary, AB T2C 5N5
Hours: Mon-Fri, 8am-5pm MT
Tel: +1 403 279 2693
Rob Rowan: rrowan@whites.com

WINNIPEG (CST)

11-2073 Logan Avenue
Winnipeg, MB R2R 0J1
Hours: Mon-Fri, 8am-5pm CT
Tel: +1 204 774 7903
Rob Rowan: rrowan@whites.com

SUDBURY (EST)

922 Cambrian Heights Drive, Unit 2
Sudbury, ON P3C 5L8
Hours: Mon-Fri, 8am-5pm ET
Tel: +1 705 885 1242
Josh Desormeaux: jdesormeaux@whites.com

TORONTO (EST)

800 Islington Avenue
Toronto, ON M8Z 6A1
Hours: Mon-Fri, 8am-5pm ET
Tel: +1 416 239 5050
After-hours Emergencies: +1 647 222 0454
Michael Drabot: mdrabot@whites.com

Camera
Hours: Mon-Fri, 8am-6pm ET
After-hours Emergencies: +1 416 522 4285
Trevor Huys: thuys@whites.com

LES Toronto
Hours: Mon-Fri, 7:30am-5:30pm ET
Tel: +1 416 410 5858
Email: wlestoronto@whites.com
Paul Potvin: ppotvin@whites.com

The Store @ WFW (Expendables)
Hours: Mon-Fri, 8am-5pm ET
thestore@whites.com

HALIFAX (AST)

315 Wilkinson Avenue, Unit #1,
Dartmouth, NS B3B 0M6
Hours: Mon-Fri, 8am-5pm AT
Tel: +1 902 450 1284
Trevor Sutherland: tsutherland@whites.com

whites.com
whitesstudios.com
whitesles.com

